

Perovskite Solar Cells

n-i-p Devices : ITO / ETM / Perovskite / HTM / Metal

Metal Anode(Au)	ETM TiO ₂
HTM(Spiro-OMeTAD)	LT-S905 (PCBM)
Perovskite(MAPbI ₃)	Perovskite (Active Layer) LT-S9126 (MAI) LT-S9147 (PbI ₂)
ETM(TiO ₂)	HTM LT-S922 (Spiro-OMeTAD) LT-N168 (PTAA)
Transparent cathode(FTO)	
Glass	

p-i-n Devices : ITO / HTM (SAM) / Perovskite / ETM / Metal

Metal Cathode(Al)	HTM LT-N168 (PTAA) LT-PS001 (PEDOT:PSS)
ETM(PCBM)	SAM LT-S9557 (Me-4PACz) LT-S9677 (CbzNaph)
Perovskite(MAPbI ₃)	Perovskite (Active Layer) LT-S9126 (MAI) LT-S9147 (PbI ₂)
HTM/SAM(PEDOT:PSS)	ETM LT-S905 (PCBM) LT-S903 (C ₆₀) · LT-E304 (BCP)
Transparent anode(ITO)	
Glass	

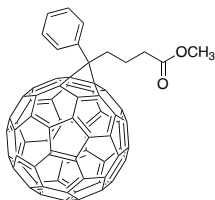
Product Number	SAM Layer	JSC (mA/cm ²)	FF (%)	PCE (%)
LT-S9747	DMAcPA	25.69	84.73	25.9
LT-S9727	MPA-CPA	24.8	84.5	25.2
LT-S9677	CbzNaph	24.69	83.4	24.1
LT-S9674	DC-PA + IAHA	24.66	82.5	23.6
LT-S9740	PPA	24.83	82	23.2
LT-S9737	3PATAT-C3	24.5	83	23
LT-S9679	2BrPXZPA	23.59	81.7	22.9
CS_SAM_01	Br-2EPSe	24.49	82.86	22.73
LT-S9667	MPA-Ph-CA	23.55	84	22.5
LT-S9649	Br-2EPT	25.11	82	22.4
CS_SAM_02	FMPA-BT-CA	23.33	83.3	22.4
CS_SAM_03	2PATAT-C3	23.3	83	22.2
CS_SAM_04	3PATAT-C4	23.3	83	22.1
CS_SAM_05	2FMPA-BT-CA	22.81	83.1	21.7
CS_SAM_06	PPAOMe	24.7	79.2	21.5
LT-S9583	EADR03	22.9	80	21.2
LT-S9750	MPA-BT-CA	22.25	84.8	21.2
CS_SAM_07	1PATAT-C3	24	82	21.1
CS_SAM_08	EADR04	22.6	80	21
LT-S9557	Me-4PACz	20.7	82	20.8
LT-S9566	2PACz	21.9	80.2	20.8
LT-S9573	MeO-2PACz	22.2	80.5	20.4

[For full SAMs list, please check Here](#)

n-i-p device

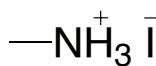
ETM

LT-S905 PCBM
[160848-22-6]
>99.8%



Perovskite (Active Layer)

LT-S9126 MAI
[14965-49-2]
>99.5% recrystallized 4 times

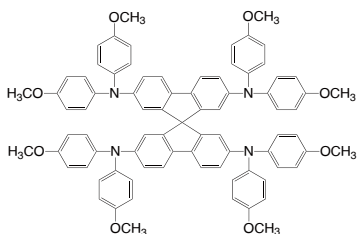


LT-S9147 PbI₂
[10101-63-0]
99.999% (trace metals basis)

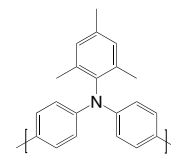


HTM

LT-S922 Spiro-MeOTAD
[207739-72-8]
>99.8%



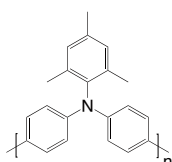
LT-N168 PTAA
[1333317-99-9]
Mw = 20,000~100,000 (GPC)



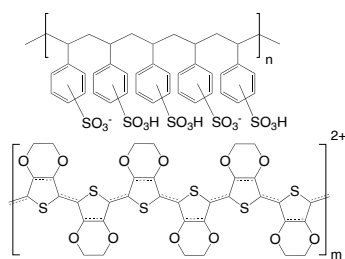
p-i-n device

HTM

LT-N168 PTAA
[1333317-99-9]
Mw = 20,000~100,000 (GPC)

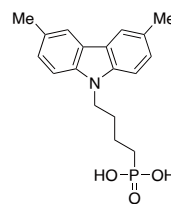


LT-PS001 PEDOT:PSS
[155090-83-8]

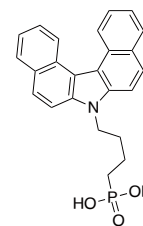


SAM

LT-S9557 Me-4PACz
[2747959-96-0]
>99%



LT-S9677 CbzNaph
[2882156-63-8]
>99%



Perovskite (Active Layer)

LT-S9126MAI
[14965-49-2]
>99.5% recrystallized 4 times

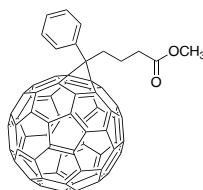


LT-S9147PbI₂
[10101-63-0]
99.999% (trace metals basis)



ETM

LT-S905 PCBM
[160848-22-6]
>99.5%



LT-S903 C₆₀
[99685-96-8]
>99.9%



LT-E304 BCP
[4733-39-5]
Sublimed >99.5%

