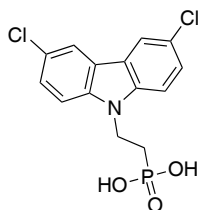


Self-assembled monolayers

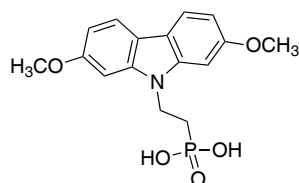
LT-S9673 Cl-2PACz

>98%



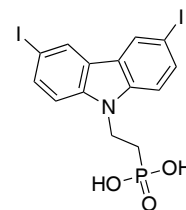
LT-S9674 DC-PA

>98%



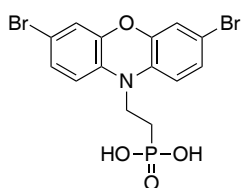
LT-S9675 I-2PACz

>98%



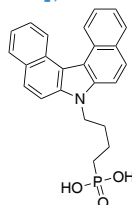
LT-S9676 Br-2EPO

>98%



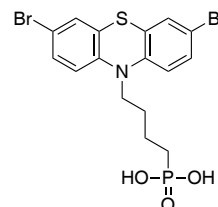
LT-S9677 CbzNaph

[2882156-63-8], >98%



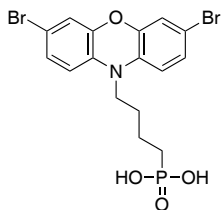
LT-S9678 2BrPTZPA

>98%



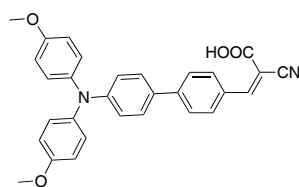
LT-S9679 2BrPXZPA

>98%



LT-S9667 MPA-Ph-CA

>99%



Perovskite grade PbBr₂

LT-S9152 PbBr₂

Lead(II) bromide

CAS No.	10031-22-8
Formula	PbBr ₂
Grade	99.999% trace metals basis
M.W.	367.01 g/mole



■ Unprocessed PbBr₂



■ Our PbBr₂ can readily be dissolved in DMF to yield 1M solution.

