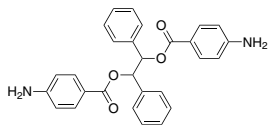
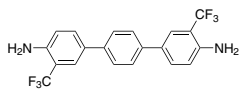


## Diamines

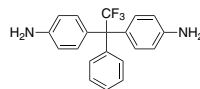
**C0143 1,2-DPEDBA**  
[2900301-27-9], >98%



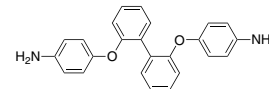
**C0144**  
>98%



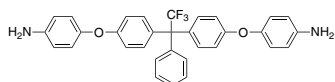
**C0145 3FDAM**  
[61204-04-4], >98%



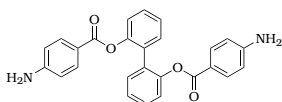
**C0146**  
[65801-73-2], >98%



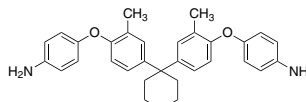
**C0147**  
[152210-12-3], >98%



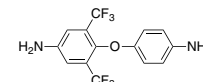
**C0148**  
[187264-34-2], >98%



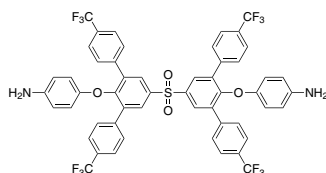
**C0149**  
[204520-42-3], >98%



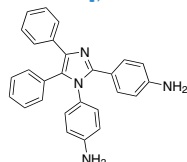
**C0150**  
[1400072-53-8], >98%



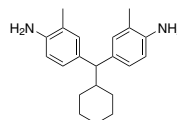
**C0151**  
[1662688-73-4], >98%



**C0152**  
[2095243-19-7], >98%

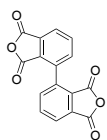


**C0153 CHMBMA**  
>98%

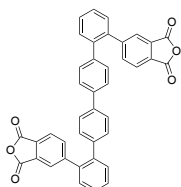


## Dianhydrides

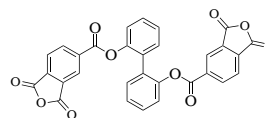
**T0057**  
[3711-04-4], >98%



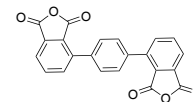
**T0058**  
>98%



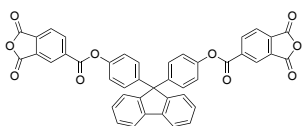
**T0059**  
[10340-82-6], >98%



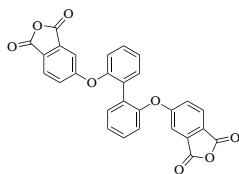
**T0060**  
[34560-71-9], >98%



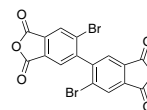
**T0061**  
[59361-41-0], >98%



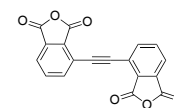
**T0062**  
[162846-76-6], >98%



**T0063**  
[165323-70-6], >98%



**T0064**  
[363602-01-1], >98%



**T0065**  
[1830316-18-1], >98%

