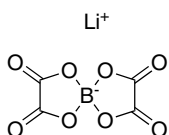


Electrolyte Additives

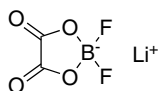
The need for lighter, thinner, and smaller products makes lithium ion batteries popular power sources for applications such as mobile phones, laptop computers, digital cameras, electric vehicles, and hybrid electric vehicles. For high power applications, the development of high capacity and high voltage electrode materials is in progress. Battery performance and safety issues are also related to the properties of the electrolytes used. To improve the properties of the electrolytes, small amounts of other components, known as electrolyte additives, are incorporated.

Lithium Salt Electrolyte Additives

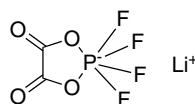
LT-EA10001 LiBOB
[244761-29-3], >95%



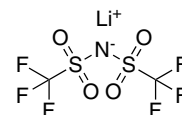
LT-EA10002 LiODFB
[409071-16-5], >95%



LT-EA10003 LiOTFP
[521065-36-1], >95%



LT-EA10004 LiTFSI
[90076-65-6], >98%



Positive electrode electrolyte Additives

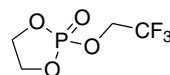
LT-EA20001 DTD
[1072-53-3], >98%



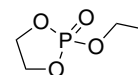
LT-EA20002 PS
[1120-71-4], >99%



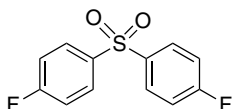
LT-EA20003 TFEP
[567605-68-9], >95%



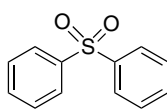
LT-EA20004 EDP
[823-31-4], >95%



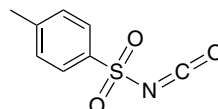
LT-EA20005 BFS
[383-29-9], >99%



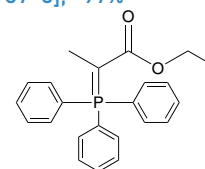
LT-EA20006
[127-63-9], >99%



LT-EA20007
[4083-64-1], >95%



LT-EA20008
[5717-37-3], >97%

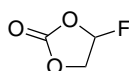


Cathode film-forming electrolyte Additives

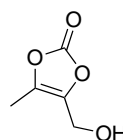
LT-EA30001 VC
[872-36-6], >99%



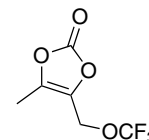
LT-EA30002 FEC
[114435-02-8], >98%



LT-EA30003
[91526-18-0], >95%

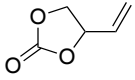


LT-EA30004
>95%

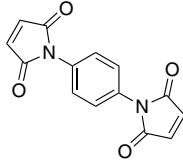


Cathode film-forming electrolyte Additives

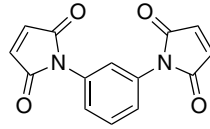
LT-EA30005
[4427-96-7], >98%



LT-EA30006
[3278-31-7], >98%

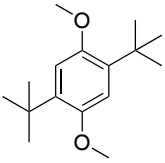


LT-EA30007
[3006-93-7], >98%

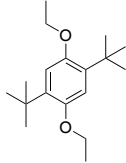


Overcharge protection electrolyte Additives

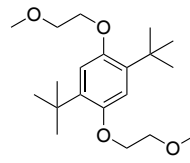
LT-EA40001
[7323-63-9], >98%



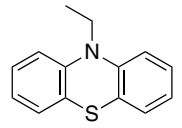
LT-EA40002
>98%



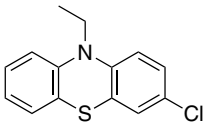
LT-EA40003
[1350770-63-6], >98%



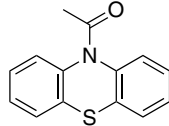
LT-EA40004
[1637-16-7], >98%



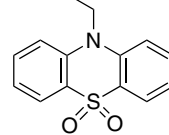
LT-EA40005
[1207-99-4], >95%



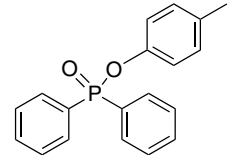
LT-EA40006
[1628-29-1], >97%



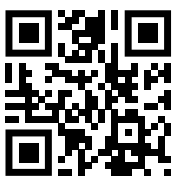
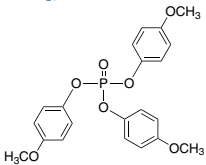
LT-EA40007
[7323-63-9], >97%



LT-EA40008 >98%



LT-EA40009
[3862-09-7], >98%



Head Office: 31F-5, No. 99, Sec. 1, Xintai 5th Rd, Xizhi, New Taipei City 22175, Taiwan TEL: +886-22697-5600, FAX: +886-2-2697-5601.
 Factory I: 2F, No. 17, R&D Road II, Science-Based Industrial Park, Hsin-Chu 30076, Taiwan TEL: +886-3-666-3188, FAX: +886-03-666-9288.
 Factory II: 1F, No.9 Gongye E. 9th Rd., Hsinchu Science Park, Hsinchu 30075, Taiwan TEL: +886-3-666-8800, FAX: +886-3-666-7058.
 總公司: 22175 新北市汐止區新台五路一段 99 號 31 樓之 5 ☎02-2697-5600 📠02-2697-501.
 新竹廠 I: 30076 新竹科學工業園區研發二路 17 號 2 樓 ☎03-666-3188 📠03-666-9288.
 新竹廠 II: 30075 新竹科學工業園區工業東九路 9 號 1 樓 ☎03-666-8800 📠03-666-7058.
 Email: sales@lumtec.com.tw; Web: www.lumtec.com.tw



Luminescence Technology Corp.
Let U Make Top Efficiency