

LT-N148 | TFB

Poly[(9,9-dioctylfluorenyl-2,7-diyl)-co-(4,4'-(N-(4-sec-butylphenyl)diphenylamine)]

CAS No. :220797-16-0

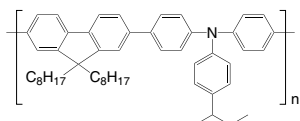
Grade :Mw >30,000 (GPC) / Mw = 10,000~30,000

Formula : $(C_{51}H_{61}N)_n$

UV :389 nm (in CH_2Cl_2)

PL :443 nm (in CH_2Cl_2)

Solvent :Soluble in CH_2Cl_2 , Toluene, $CHCl_3$



LT-N149 | Poly-TPD

Poly[N,N'-bis(4-butylphenyl)-N,N'-bis(phenyl)-benzidine]

CAS No. :472960-35-3

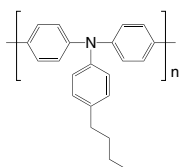
Grade :Mw = 20,000~200,000 (GPC)

Formula : $(C_{22}H_{21}N)_n$

UV :371, 388 nm (in CH_2Cl_2)

PL :424 nm (in CH_2Cl_2)

Solvent :Soluble in $CHCl_3$, Chlorobenzene



LT-N168 | PTAA

Poly[bis(4-phenyl)(2,4,6-trimethylphenyl)amine]

CAS No. :1333317-99-9

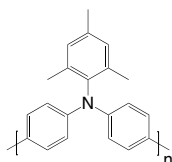
Grade :Mw = 20,000~100,000 (GPC)

Formula : $(C_{21}H_{19}N)_n$

UV :371, 388 nm (in CH_2Cl_2)

PL :424 nm (in CH_2Cl_2)

Solvent :Soluble in $CHCl_3$, Chlorobenzene, Dichlorobenzene



LT-N170 | BFB

Poly[(9,9-dioctylfluorenyl-2,7-diyl)-alt-(N,N'-bis(4-butylphenyl)-benzidine-N,N'-[1,4-diphenylene])]

CAS No. :223569-32-2

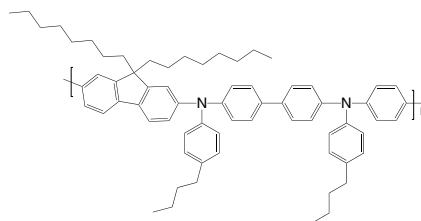
Grade :Mw >10,000 (GPC)

Formula : $(C_{73}H_{82}N_2)_n$

UV :380 nm (in THF)

PL :435 nm (in THF)

Solvent :Soluble in $CHCl_3$, Chlorobenzene, Dichlorobenzene



LT-N172

Poly[(9,9-dioctylfluorenyl-2,7-diyl)-alt-(N,N'-bis(p-butylphenyl)-1,1'-biphenylene-4,4'-diamine)]

CAS No. :1115424-53-7

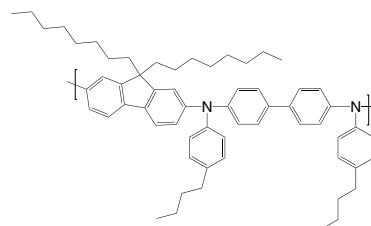
Grade :Mw >10,000 (GPC)

Formula : $(C_{61}H_{74}N_2)_n$

UV :397 nm (in THF)

PL :420 nm (in THF)

Solvent :Soluble in $CHCl_3$, Chlorobenzene, Dichlorobenzene

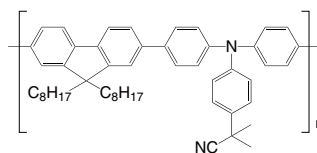


LT-N189 | iPrCN / CNPr-TFB

Poly[(9,9-dioctylfluorenyl-2,7-diyl)-co-(4,4'-(N-(diphenylamine)-(2-cyanoisopropylphenyl)))]

Grade :Mw = 10,000~100,000 (GPC)

Formula : $(C_{51}H_{58}N_2)_n$

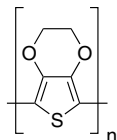


LT-EC015 | PEDOT

Poly(3,4-ethylenedioxythiophene)

CAS No. :126213-51-2

Formula : $(C_6H_4O_2S)_n$



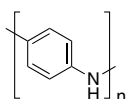
LT-EC016 | PANI

Polyaniline (emeraldine base)

CAS No. :25233-30-1

Grade :Mw >10,000

Formula : $(C_6H_5N)_n$



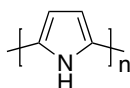
LT-EC017 | PPy

Polypyrrole

CAS No. :30604-81-0

Grade :10-50 S/cm (pressed pellet)

Formula : $(C_4H_3N)_n$



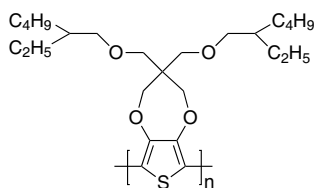
LT-EC019

2H-Thieno[3,4-b][1,4]dioxepin, 3,3-bis[[2-ethylhexyl]oxy]methyl]-3,4-dihydro

CAS No. :634591-76-7

Grade :Mw >50,000

Formula : $(C_{25}H_{42}O_4S)_n$



LT-EC021 | TBAP

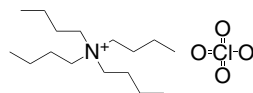
Tetrabutylammonium perchlorate

CAS No. :1923-70-2

Grade :>98%

Formula : $C_{16}H_{36}ClNO_4$

M.W. :341.91 g/mole



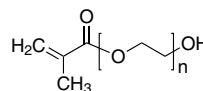
LT-EC022 | PEGMA

Poly(ethylene glycol) methacrylate

CAS No. :25736-86-1

Grade :Mw~500

Formula : $C_4H_5O(C_2H_4O)_nOH$



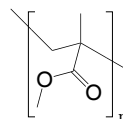
P214000000 | PMMA

Poly(methyl methacrylate)

CAS No. :9011-14-7

Grade :Mw >350,000

Formula : $[CH_2C(CH_3)(CO_2CH_3)]_n$



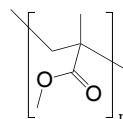
P215000000 | PMMA

Poly(methyl methacrylate)

CAS No. :9011-14-7

Grade :Mw >10,000~35,000

Formula : $[CH_2C(CH_3)(CO_2CH_3)]_n$



LT-S909 | P3HT

Poly(3-hexylthiophene-2,5-diyl)

CAS No. : 110134-47-9 / 104934-50-1

Grade : Mw >45,000 (GPC); Electronic Grade

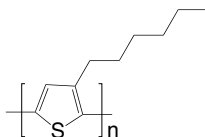
: Regio Regular >93%

Formula : $(C_{10}H_{14}S)_n$

UV : 445 nm (in THF)

PL : 564 nm (in THF)

Solvent : Soluble in $CHCl_3$, Chlorobenzene, Dichlorobenzene



LT-PS001 | PEDOT:PSS

Poly(3,4-ethylenedioxythiophene)-poly(styrenesulfonate)

Specification

CAS No. : 155090-83-8

Description : Aqueous dispersion, blue liquid.

Sodium : Max. 400 ppm

Sulfate : Max. 40 ppm

Solid content: 1.3 - 1.7 wt%

PSD d50 : 80 nm

PSD d90 : 100 nm

Resistivity : 500-5000 Ω cm

Viscosity : 5-12 mPas

Technical Data (guide values, not a specification)

Form : liquid

Odour : odourless

Colour : dark blue

PEDOT:PSS ratio: 1:6 (by weight)

PEDOT work function: approx 5.2 eV

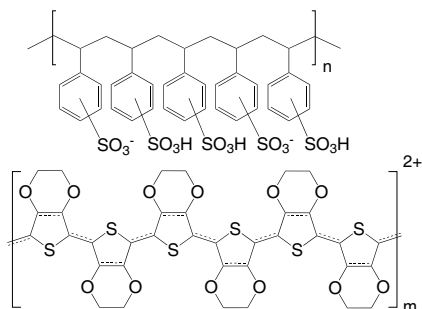
pH : 1.2 - 2.2 at 20 °C

Boiling Point : approx 100 °C

Storage:

The product is sensitive to frost and should therefore not be stored at temperatures below 5 °C.

Avoid freezing!



K0004

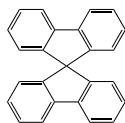
9,9'-Spirobifluorene

CAS No. :159-66-0

Grade :>98% (HPLC)

Formula :C₂₅H₁₆

M.W. :316.39 g/mole



K0033

9,9'-Spirobifluorene-2,2'-diamine

CAS No. :67665-45-6

Grade :>98% (HPLC)

Formula :C₂₅H₁₈N₂

M.W. :346.42 g/mole



K0092

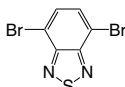
4,7-Dibromobenzo[c][1,2,5]thiadiazole

CAS No. :15155-41-6

Grade :>98% (HPLC)

Formula :C₆H₂Br₂N₂S

M.W. :293.97 g/mole



K0094

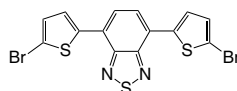
4,7-Bis(5-bromothiophen-2-yl)benzo[c][1,2,5]thiadiazole

CAS No. :288071-87-4

Grade :>98% (HPLC)

Formula :C₁₄H₆Br₂N₂S₃

M.W. :458.21 g/mole



K0264

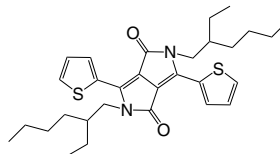
2,5-Bis(2-ethylhexyl)-3,6-di(thiophen-2-yl)pyrrolo[3,4-c]pyrrole-1,4(2H,5H)-dione

CAS No. :1185885-86-2

Grade :>97% (NMR)

Formula :C₃₀H₄₀N₂O₂S₂

M.W. :524.78 g/mole



K0291

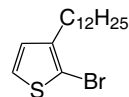
2-Bromo-3-dodecylthiophene

CAS No. :139100-06-4

Grade :>96% (HPLC)

Formula :C₁₆H₂₇BrS

M.W. :331.35 g/mole



K0330

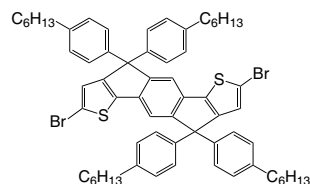
2,7-Dibromo-4,9-dihydro-4,4,9,9-tetrakis(4-hexylphenyl)-s-indaceno[1,2-b:5,6-b']dithiophene

CAS No. :1049034-71-0

Grade :>98% (HPLC)

Formula :C₆₄H₇₂Br₂S₂

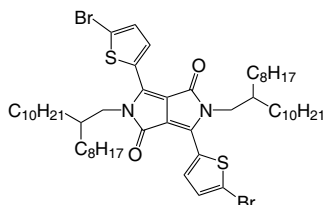
M.W. :1065.19 g/mole



K0445

3,6-Bis(5-bromothiophen-2-yl)-2,5-bis(2-octyldodecyl)pyrrole
[3,4-c]pyrrole-1,4(2H,5H)-dione

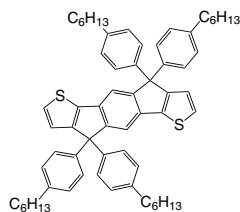
CAS No. :1260685-63-9
Grade :>98% (HPLC)
Formula :C₅₄H₈₆Br₂N₂O₂S₂
M.W. :1019.21 g/mole



K0555

4,9-Dihydro-4,4,9,9-tetrakis(4-hexylphenyl)-s-indaceno[1,2-b
:5,6-b']dithiophene

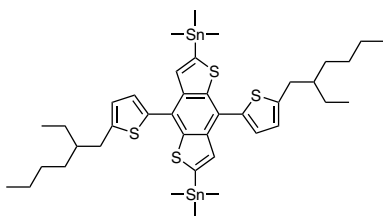
CAS No. :1049034-67-4
Grade :>98% (HPLC)
Formula :C₆₄H₇₄S₂
M.W. :907.4 g/mole



K0560

2,6-Bis(trimethyltin)-4,8-bis(5-(2-ethylhexyl)thiophen-2-yl)
benzo[1,2-b:4,5-b']dithiophene

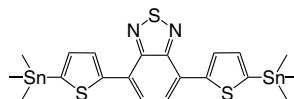
CAS No. :1352642-37-5
Grade :>98% (NMR)
Formula :C₄₀H₅₈S₄Sn₂
M.W. :904.57 g/mole



K0664

4,7-Bis(5-(trimethylstannyl)thiophen-2-yl)benzo[c][1,2,5]
thiadiazole

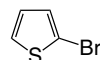
CAS No. :1025451-57-3
Grade :>98% (NMR)
Formula :C₂₀H₂₄N₂S₃Sn₂
M.W. :626.03 g/mole



K0735

2-Bromothiophene

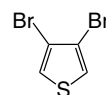
CAS No. :1003-09-4
Grade :>98% (HPLC)
Formula :C₄H₃BrS
M.W. :163.04 g/mole



K0737

3,4-Dibromothiophene

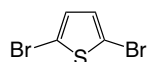
CAS No. :3141-26-2
Grade :>98% (HPLC)
Formula :C₄H₂Br₂S
M.W. :241.93 g/mole



K0738

2,5-Dibromothiophene

CAS No. :3141-27-3
Grade :>98% (HPLC)
Formula :C₄H₂Br₂S
M.W. :241.93 g/mole



K1128

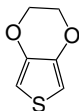
2,3-dihydrothieno[3,4-b][1,4]dioxine

CAS No. :126213-50-1

Grade :>99%

Formula :C₆H₆O₂S

M.W. :142.18 g/mole



K1207

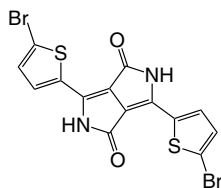
3,6-Bis(5-bromothiophen-2-yl)pyrrolo[3,4-c]pyrrole-1,4(2H,5H)-dione

CAS No. :777079-55-7

Grade :>98%

Formula :C₁₄H₆Br₂N₂O₂S₂

M.W. :458.15 g/mole



K1210

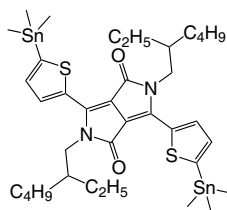
2,5-Bis(2-ethylhexyl)-3,6-bis(5-(trimethylstannyl)thiophen-2-yl)pyrrolo[3,4-c]pyrrole-1,4(2H,5H)-dione

CAS No. :1392422-47-7

Grade :>98%

Formula :C₃₆H₅₆N₂O₂S₂Sn₂

M.W. :850.39 g/mole



K1214

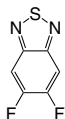
5,6-Difluorobenzo[c][1,2,5]thiadiazole

CAS No. :1293389-28-2

Grade :>98%

Formula :C₆H₂F₂N₂S

M.W. :172.16 g/mole



K1217

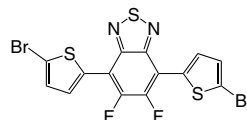
4,7-Bis(5-bromothiophen-2-yl)-5,6-difluorobenzo[c][1,2,5]thiadiazole

CAS No. :1304773-89-4

Grade :>98%

Formula :C₁₄H₄Br₂F₂N₂S₃

M.W. :494.19 g/mole



K1220

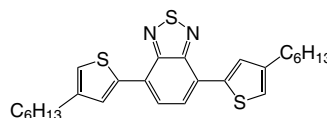
4,7-Bis(4-hexylthiophen-2-yl)benzo[c][1,2,5]thiadiazole

CAS No. :761416-46-0

Grade :>98%

Formula :C₂₆H₃₂N₂S₃

M.W. :468.74 g/mole



K1221

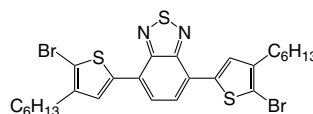
4,7-Bis(5-bromo-4-hexylthiophen-2-yl)benzo[c][1,2,5]thiadiazole

CAS No. :444579-39-9

Grade :>98%

Formula :C₂₆H₃₀Br₂N₂S₃

M.W. :626.53 g/mole



LT-EC010

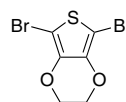
5,7-Dibromo-2,3-dihydrothieno[3,4-b][1,4]dioxine

CAS No. :174508-31-7

Grade :>98%

Formula :C₆H₄Br₂O₂S

M.W. :299.97 g/mole



LT-EC011

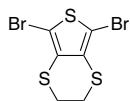
2,5-Dibromo-3,4-Ethylenedithiophene

CAS No. :623573-55-7

Grade :>98%

Formula :C₆H₄Br₂S₂

M.W. :332.1 g/mole



LT-EC012 DPP

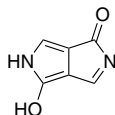
Diketopyrrolopyrrole

CAS No. :114482-12-1

Grade :>95%

Formula :C₆H₄N₂O₂

M.W. :136.11 g/mole



LT-EC013

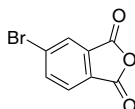
5-Bromoisobenzofuran-1,3-dione

CAS No. :86-90-8

Grade :>97%

Formula :C₈H₃BrO₃

M.W. :227.01 g/mole



LT-EC018

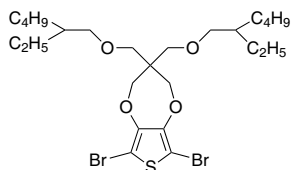
6,8-Dibromo-3,3-bis((2-ethylhexyl)oxy)methyl)-3,4-dihydro-2H-thieno[3,4-b][1,4]dioxepine

CAS No. :700817-08-9

Grade :>99%

Formula :C₂₅H₄₂Br₂O₄S

M.W. :598.47 g/mole



LT-EC020 TBAPF6

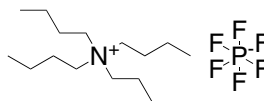
Tetrabutylammonium hexafluorophosphate

CAS No. :3109-63-5

Grade :>99%

Formula :C₁₆H₃₆F₆NP

M.W. :387.43 g/mole



LT-EC021 TBAP

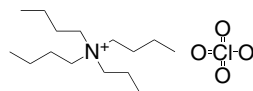
Tetrabutylammonium perchlorate

CAS No. :1923-70-2

Grade :>98%

Formula :C₁₆H₃₆ClNO₄

M.W. :341.91 g/mole



LT-MOF0226 H4BIPA-TC

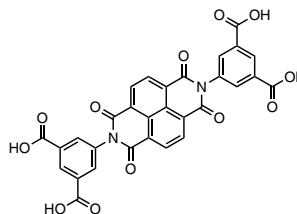
5,5'-(1,3,6,8-tetraoxo-1,3,6,8-tetrahydrobenzo[lmn][3,8]phenanthroline-2,7-diyl)dibenzene-1,3-dicarboxylic acid

CAS No. :350024-36-1

Grade :>95%

Formula :C₃₀H₁₄N₂O₁₂

M.W. :594.44 g/mole



T0001 PMDA

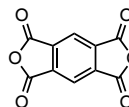
Pyromellitic Dianhydride

CAS No. :89-32-7

Grade :>99%

Formula :C₁₀H₂O₆

M.W. :218.12 g/mole



T0002 | BTDA

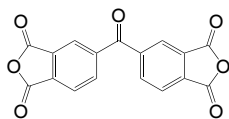
3,3',4,4'-Benzophenonetetracarboxylic Dianhydride

CAS No. :2421-28-5

Grade :>98%

Formula :C₁₇H₆O₇

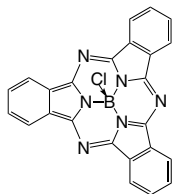
M.W. :322.23 g/mole



LT-S943 | SubPC

Boron subphthalocyanine chloride

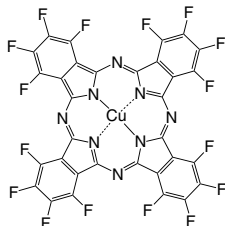
CAS No.	:36530-06-0
Grade	:Sublimed >99%
Formula	: $C_{24}H_{12}BN_6Cl$
M.W.	:430.66 g/mole
UV	:565 nm (in DMF)
PL	:577 nm (in DMF)
TGA	:>340 °C (0.5% weight loss)



LT-S928 | F16CuPC

Copper(II)1,2,3,4,8,9,10,11,15,16,17,18,22,23,24,25-hexadecafluoro-29H,31H-phthalocyanine

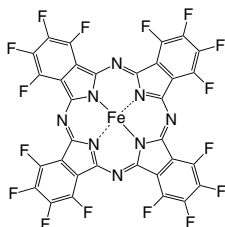
CAS No.	:14916-87-1
Grade	:Sublimed product
Formula	: $C_{32}CuF_{16}N_8$
M.W.	:863.93 g/mole
UV	:690 nm (in THF)
TGA	:>400 °C (0.5% weight loss)



LT-S9177 | F16FePC

Iron(II)1,2,3,4,8,9,10,11,15,16,17,18,22,23,24,25-hexadecafluoro-29H,31H-phthalocyanine

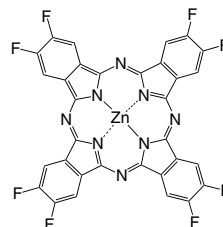
CAS No.	:23844-93-1
Grade	:Sublimed >99%
Formula	: $C_{32}F_{16}FeN_8$
M.W.	:856.22 g/mole
UV	:333, 627 nm (in Acetone)
TGA	:>300 °C (0.5% weight loss)



LT-S9172 | F8ZnPC

Zinc(II)-2,3,9,10,16,17,23,24-octafluoro-29H,31H-phthalocyanine

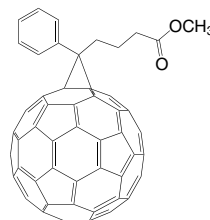
CAS No.	:676519-80-5
Grade	:Sublimed >99%
Formula	: $C_{32}H_8F_8N_8Zn$
M.W.	:721.86 g/mole
UV	:338, 656 nm (in DMF)
TGA	:>300 °C (0.5% weight loss)



LT-S905 | PCBM

(6,6)-Phenyl C_{61} butyric acid methyl ester

CAS No.	:160848-22-6
Grade	:>99.5%
Formula	: $C_{72}H_{14}O_2$
M.W.	:910.88 g/mole
UV	:258, 328 nm (in THF)



LT-S903 | C₆₀

Fullerene- C_{60}

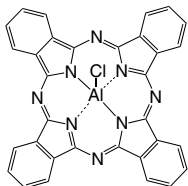
CAS No.	:99685-96-8
Grade	:>99.9% / >99.5%
Formula	: C_{60}
M.W.	:720.64 g/mole
UV	:251 nm (in CH_2Cl_2)
TGA	:>450 °C (0.5% weight loss)



LT-S9025 | AIPCCl

Aluminum phthalocyanine chloride

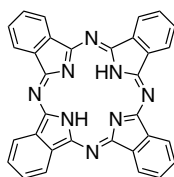
CAS No. :14154-42-8
 Grade :Sublimed >99%
 Formula : $C_{32}H_{16}AlClN_8$
 M.W. :574.97 g/mole
 UV :675 nm (in DMF)
 TGA :>370 °C (0.5% weight loss)



LT-N222 | H2PC

Phthalocyanine

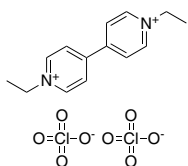
CAS No. :574-93-6
 Grade :Sublimed product
 Formula : $C_{32}H_{18}N_8$
 M.W. :514.54 g/mole
 UV :279, 693 nm
 PL :418 nm
 TGA :>350 °C (0.5% weight loss)



LT-EC014 | EV

Ethyl viologen diperchlorate

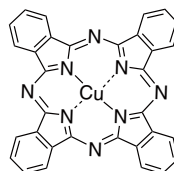
CAS No. :36305-51-8
 Grade :>98%
 Formula : $C_{14}H_{18}Cl_2N_2O_8$
 M.W. :413.21 g/mole



LT-E201 | CuPC

Copper(II) phthalocyanine

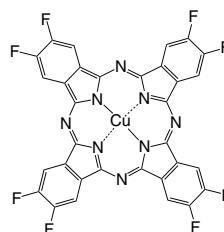
CAS No. :147-14-8
 Grade :Sublimed >99% / Unsublimed >97%
 Formula : $C_{32}H_{16}CuN_8$
 M.W. :576.08 g/mole
 UV :345, 631 nm (in CH_2Cl_2)
 PL :404 nm (film)
 TGA :>430 °C (0.5% weight loss)



LT-D2010 | 2,3-F8CuPC

Copper(II) 2,3,9,10,16,17,23,24-octafluorophthalocyanine

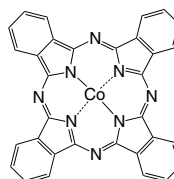
CAS No. :148651-60-9
 Grade :Sublimed product
 Formula : $C_{32}H_8CuF_8N_8$
 M.W. :720.01 g/mole



LT-D2001 | CoPC

Cobalt(II) phthalocyanine

CAS No. :3317-67-7
 Grade :Sublimed product
 Formula : $C_{32}H_{16}CoN_8$
 M.W. :571.47 g/mole



LT-D0036 | H2TAPP

meso-Tetra(4-aminophenyl)porphine

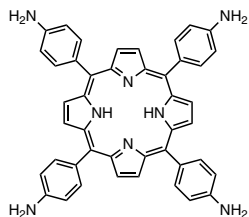
CAS No. :22112-84-1

Grade :>98% (NMR)

Formula :C₄₄H₃₄N₈

M.W. :674.81 g/mole

Storage :2~8 °C



LT-D0034 |

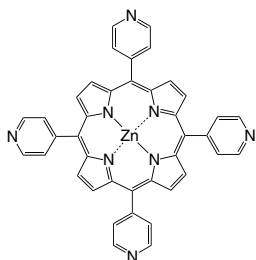
Zinc(II) meso-tetra(4-pyridyl)porphine

CAS No. :31183-11-6

Grade :>98%

Formula :C₄₀H₂₄N₈Zn

M.W. :682.06 g/mole



LT-D0033 | TPP

meso-Tetra(4-pyridyl)porphine

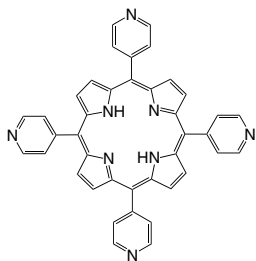
CAS No. :16834-13-2

Grade :>98%

Formula :C₄₀H₂₆N₈

M.W. :618.69 g/mole

Density :1.4±0.1 g/cm³



LT-E003 | MoO₃

Molybdenum(VI) oxide

CAS No. :1313-27-5
 Grade :>99.998%
 Formula :MoO₃
 M.W. :143.94 g/mole

MoO₃LT-EC001 | WO₃

Tungsten(VI) oxide

CAS No. :1314-35-8
 Grade :>99.9%
 Formula :WO₃
 M.W. :231.84 g/mole

WO₃LT-EC002 | Nb₂O₅

Niobium(V) oxide

CAS No. :1313-96-8
 Grade :>99.9%
 Formula :Nb₂O₅
 M.W. :265.81 g/mole

Nb₂O₅LT-EC003 | TiO₂

Titanium(IV) Oxide

CAS No. :13463-67-7
 Grade :>99%
 Formula :TiO₂
 M.W. :79.87 g/mole

TiO₂

LT-EC004 | NiO

Nickel(II) oxide

CAS No. :1313-99-1
 Grade :>99%
 Formula :NiO
 M.W. :74.69 g/mole

NiO

LT-EC005 | IrO₂

Iridium(IV) Oxide

CAS No. :12030-49-8
 Grade :>99%
 Formula :IrO₂
 M.W. :224.22 g/mole

IrO₂LT-EC006 | Fe₄[Fe(CN)₆]₃

Iron(III) ferrocyanide

CAS No. :14038-43-8
 Formula :C₁₈Fe₇N₁₈
 M.W. :859.23 g/mole

Fe₄[Fe(CN)₆]₃LT-EC007 | V₂O₅

Vanadium(V) oxide

CAS No. :1314-62-1
 Grade :>99%
 Formula :V₂O₅
 M.W. :181.88 g/mole

V₂O₅

LT-EC008 | CoO

Cobalt(II) oxide

CAS No. :1307-96-6
 Grade :>99.9%
 Formula :CoO
 M.W. :74.93 g/mole

CoO

LT-EC009 | Rh₂O₃

Rhodium(III) oxide

CAS No. :12036-35-0
 Grade :>99.9%
 Formula :Rh₂O₃
 M.W. :253.81 g/mole

Rh₂O₃