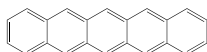


## LT-S901 | Pentacene

## Pentacene

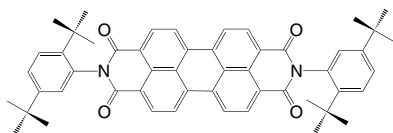
CAS No.	: 135-48-8
Grade	: Sublimed >99%
Formula	: C <sub>22</sub> H <sub>14</sub>
M.W.	: 278.35 g/mole
UV	: 300 nm (in CH <sub>2</sub> Cl <sub>2</sub> )
PL	: 509 nm (in CH <sub>2</sub> Cl <sub>2</sub> )
TGA	: >290 °C (0.5% weight loss)



## LT-S902 | PDCDT

*N,N'*-Bis(2,5-di-*tert*-butylphenyl)-3,4,9,10-perylene dicarboximide

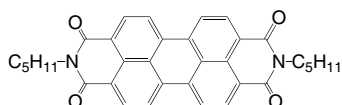
CAS No.	: 83054-80-2
Grade	: Sublimed >99%
Formula	: C <sub>52</sub> H <sub>50</sub> N <sub>2</sub> O <sub>4</sub>
M.W.	: 766.96 g/mole
UV	: 524 nm (in CH <sub>2</sub> Cl <sub>2</sub> )
PL	: 544, 574 nm (in CH <sub>2</sub> Cl <sub>2</sub> )
TGA	: >350 °C (0.5% weight loss)



## LT-S904 | PenPTC

*N,N'*-Dipentyl-3,4,9,10-perylene dicarboximide

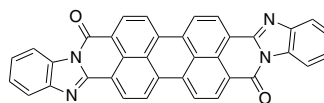
CAS No.	: 76372-75-3
Grade	: Sublimed >99%
Formula	: C <sub>34</sub> H <sub>30</sub> N <sub>2</sub> O <sub>4</sub>
M.W.	: 530.61 g/mole
UV	: 523 nm (in CH <sub>2</sub> Cl <sub>2</sub> )
PL	: 535, 573 nm (in CH <sub>2</sub> Cl <sub>2</sub> )
TGA	: >350 °C (0.5% weight loss)



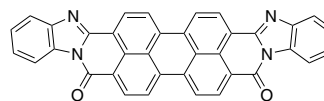
## LT-S918 | PTCBI

Bisbenzimidazo[2,1-a:1',2'-b']anthra[2,1,9-def:6,5,10-d'e'f'] diisoguinoline-10,21-dione, with *cis* isomer

CAS No.	: 79534-91-1
Grade	: Sublimed >99%
Formula	: C <sub>36</sub> H <sub>16</sub> N <sub>4</sub> O <sub>2</sub>
M.W.	: 536.54 g/mole
PL	: 414 nm (in CH <sub>2</sub> Cl <sub>2</sub> )
TGA	: >420 °C (0.5% weight loss)



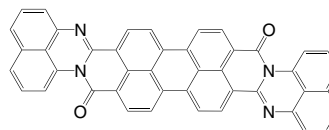
+



## LT-S919 | ADIDI

Anthra[2',1':9'',4',5',6',6'',5'',10''':4',5',6']diisoquino[2,1-a:2',1'-a'] dipiperidine-12,25-dione, with *cis* isomer

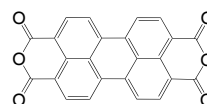
CAS No.	: 6859-32-1
Grade	: Sublimed product
Formula	: C <sub>44</sub> H <sub>20</sub> N <sub>4</sub> O <sub>2</sub>
M.W.	: 636.66 g/mole
PL	: 413 nm (in CH <sub>2</sub> Cl <sub>2</sub> )
TGA	: >430 °C (0.5% weight loss)



## LT-S920 | PTCDA

## 3,4,9,10-Perylenetetracarboxylic dianhydride

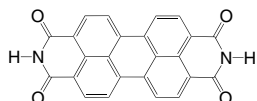
CAS No.	: 128-69-8
Grade	: Sublimed >99%
Formula	: C <sub>24</sub> H <sub>6</sub> O <sub>6</sub>
M.W.	: 392.32 g/mole
PL	: 413 nm (in CH <sub>2</sub> Cl <sub>2</sub> )
TGA	: >450 °C (0.5% weight loss)



**LT-S921** | PTCDI

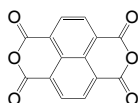
3,4,9,10-Perylenetetracarboxylic diimide

CAS No.	: 81-33-4
Grade	: Sublimed >99%
Formula	: C <sub>24</sub> H <sub>10</sub> N <sub>2</sub> O <sub>4</sub>
M.W.	: 390.35 g/mole
PL	: 413 nm (in CH <sub>2</sub> Cl <sub>2</sub> )
TGA	: >450 °C (0.5% weight loss)

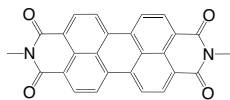
**LT-S924** | NTCDA

1,4,5,8-Naphthalenetetracarboxylic dianhydride

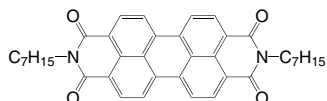
CAS No.	: 81-30-1
Grade	: Sublimed >99%
Formula	: C <sub>14</sub> H <sub>4</sub> O <sub>6</sub>
M.W.	: 268.18 g/mole
UV	: 366 nm (in CH <sub>2</sub> Cl <sub>2</sub> )
PL	: 394 nm (in CH <sub>2</sub> Cl <sub>2</sub> )
TGA	: >270 °C (0.5% weight loss)

**LT-S925** | MePTC*N,N'*-Dimethyl-3,4,9,10-perylene dicarboximide

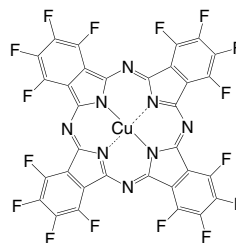
CAS No.	: 5521-31-3
Grade	: Sublimed product
Formula	: C <sub>26</sub> H <sub>14</sub> N <sub>2</sub> O <sub>4</sub>
M.W.	: 418.4 g/mole
UV	: 522 nm (in CH <sub>2</sub> Cl <sub>2</sub> )
PL	: 571 nm (in CH <sub>2</sub> Cl <sub>2</sub> )
TGA	: >440 °C (0.5% weight loss)

**LT-S926** | HepPTC*N,N'*-Diheptyl-3,4,9,10-perylene dicarboximide

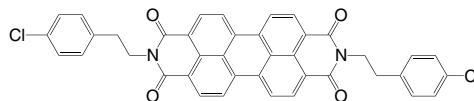
CAS No.	: 95689-91-1
Grade	: Sublimed >99%
Formula	: C <sub>38</sub> H <sub>38</sub> N <sub>2</sub> O <sub>4</sub>
M.W.	: 586.72 g/mole
UV	: 524 nm (in CH <sub>2</sub> Cl <sub>2</sub> )
PL	: 537, 571 nm (in CH <sub>2</sub> Cl <sub>2</sub> )
TGA	: >390 °C (0.5% weight loss)

**LT-S928** | F<sub>16</sub>CuPCCopper(II) 1,2,3,4,8,9,10,11,15,16,17,18,22,23,24,25-hexadecafluoro-29*H*,31*H*-phthalocyanine

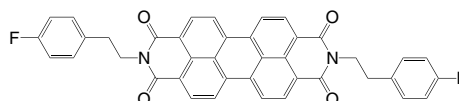
CAS No.	: 14916-87-1
Grade	: Sublimed product
Formula	: C <sub>32</sub> F <sub>16</sub> CuN <sub>8</sub>
M.W.	: 863.92 g/mole
UV	: 690 nm (in CH <sub>2</sub> Cl <sub>2</sub> )

**LT-S935** | 4CIPEPTC*N,N'*-Bis[2-(4-chloro-phenyl)-ethyl]-3,4,9,10-perylene dicarboximide

CAS No.	: 215726-51-5
Grade	: Sublimed >99%
Formula	: C <sub>40</sub> H <sub>24</sub> Cl <sub>2</sub> N <sub>2</sub> O <sub>4</sub>
M.W.	: 667.53 g/mole
UV	: 524 nm (in CH <sub>2</sub> Cl <sub>2</sub> )
PL	: 544 nm (in CH <sub>2</sub> Cl <sub>2</sub> )
TGA	: >370 °C (0.5% weight loss)

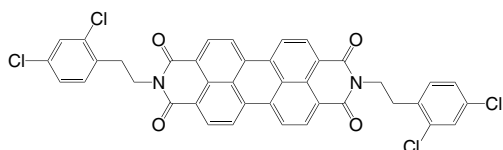
**LT-S936** | 4FPEPTC*N,N'*-Bis[2-(4-fluoro-phenyl)-ethyl]-3,4,9,10-perylene dicarboximide

CAS No.	: 215726-57-1
Grade	: Sublimed >99%
Formula	: C <sub>40</sub> H <sub>24</sub> F <sub>2</sub> N <sub>2</sub> O <sub>4</sub>
M.W.	: 634.63 g/mole
UV	: 524 nm (in CH <sub>2</sub> Cl <sub>2</sub> )
PL	: 538 nm (in CH <sub>2</sub> Cl <sub>2</sub> )
TGA	: >370 °C (0.5% weight loss)

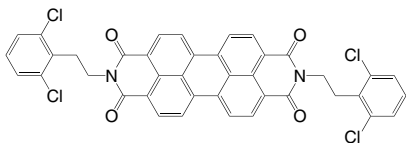


**LT-S937** | 2,4CIPEPTC*N,N'*-Bis[2-(2,4-dichloro-phenyl)-ethyl]-3,4,9,10-perylene dicarboximide

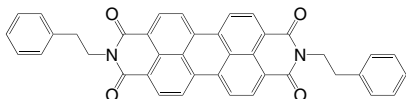
Grade	: Sublimed >99%
Formula	: C <sub>40</sub> H <sub>22</sub> Cl <sub>4</sub> N <sub>2</sub> O <sub>4</sub>
M.W.	: 736.42 g/mole
UV	: 524 nm (in CH <sub>2</sub> Cl <sub>2</sub> )
PL	: 536 nm (in CH <sub>2</sub> Cl <sub>2</sub> )
TGA	: >390 °C (0.5% weight loss)

**LT-S938** | 2,6CIPEPTC*N,N'*-Bis[2-(2,6-dichloro-phenyl)-ethyl]-3,4,9,10-perylene dicarboximide

Grade	: Sublimed >99%
Formula	: C <sub>40</sub> H <sub>22</sub> Cl <sub>4</sub> N <sub>2</sub> O <sub>4</sub>
M.W.	: 736.42 g/mole
UV	: 524 nm (in CH <sub>2</sub> Cl <sub>2</sub> )
PL	: 536 nm (in CH <sub>2</sub> Cl <sub>2</sub> )
TGA	: >440 °C (0.5% weight loss)

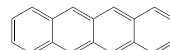
**LT-S939** | PEPTC*N,N'*-Bis(2-phenyl-ethyl)-3,4,9,10-perylene dicarboximide

CAS No.	: 67075-37-0
Grade	: Sublimed >99%
Formula	: C <sub>40</sub> H <sub>26</sub> N <sub>2</sub> O <sub>4</sub>
M.W.	: 598.64 g/mole
UV	: 524 nm (in CH <sub>2</sub> Cl <sub>2</sub> )
PL	: 537 nm (in CH <sub>2</sub> Cl <sub>2</sub> )
TGA	: >390 °C (0.5% weight loss)

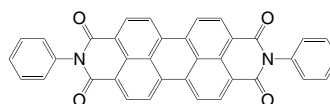
**LT-S940** | Tetracene

2,3-Benzanthracene

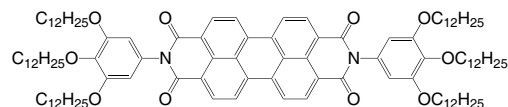
CAS No.	: 92-24-0
Grade	: Sublimed >99% (HPLC)
Formula	: C <sub>18</sub> H <sub>12</sub>
M.W.	: 228.29 g/mole
UV	: 277 nm (in CH <sub>2</sub> Cl <sub>2</sub> )
PL	: 514 nm (in CH <sub>2</sub> Cl <sub>2</sub> )
TGA	: >180 °C (0.5% weight loss)

**LT-S941** | DP-PTCDI*N,N'*-Diphenyl-3,4,9,10-perylene dicarboximide

CAS No.	: 128-65-4
Grade	: Sublimed >99%
Formula	: C <sub>36</sub> H <sub>18</sub> N <sub>2</sub> O <sub>4</sub>
M.W.	: 542.54 g/mole
UV	: 481, 515 nm (in THF)
PL	: 531 nm (in THF)
TGA	: >380 °C (0.5% weight loss)

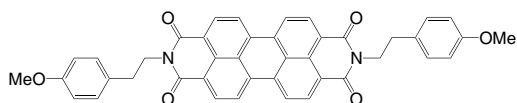
**LT-S956** | PDI1*N,N'*-Bis(3,4,5-tridodecyloxyphenyl)-3,4,9,10-perylene dicarboximide

CAS No.	: 351377-40-7
Grade	: >99% (NMR)
Formula	: C <sub>108</sub> H <sub>162</sub> N <sub>2</sub> O <sub>10</sub>
M.W.	: 1648.45 g/mole
UV	: 489, 526 nm (in CH <sub>2</sub> Cl <sub>2</sub> )
TGA	: >290 °C (0.5% weight loss)



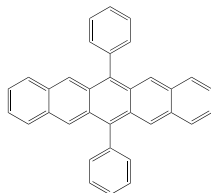
**LT-S960** | 4MeOPEPTC*N,N'*-Bis[2-(4-methoxyphenyl)-ethyl]-3,4,9,10-perylene dicarboximide

CAS No. : 119215-14-4  
 Grade : Sublimed >99%  
 Formula :  $C_{42}H_{30}N_2O_6$   
 M.W. : 658.70 g/mole  
 UV : 458, 524 nm (in  $CH_2Cl_2$ )  
 PL : 534 nm (in  $CH_2Cl_2$ )  
 TGA : >370 °C (0.5% weight loss)

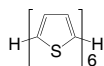
**LT-S968** | 6,13-DP-Penta

6,13-Diphenylpentacene

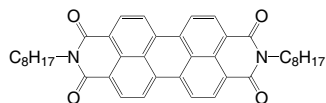
CAS No. : 76727-11-2  
 Grade : Sublimed >99% (HPLC)  
 Formula :  $C_{34}H_{22}$   
 M.W. : 430.54 g/mole  
 UV : 307 nm (in  $CH_2Cl_2$ )  
 PL : 447 nm (in  $CH_2Cl_2$ )  
 TGA : >250 °C (0.5% weight loss)

**LT-S969** |  $\alpha$ -6T $\alpha$ -Sexithiophene

CAS No. : 88493-55-4  
 Grade : Sublimed >99%  
 Formula :  $C_{24}H_{14}S_6$   
 M.W. : 494.76 g/mole  
 UV : 437 nm (in  $CH_2Cl_2$ )  
 PL : 511 nm (in  $CH_2Cl_2$ )  
 TGA : >330 °C (0.5% weight loss)

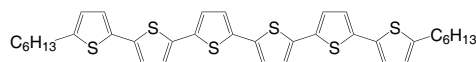
**LT-S970** | PTCDI- $C_8$ *N,N'*-Dioctyl-3,4,9,10-perylene dicarboximide

CAS No. : 78151-58-3  
 Grade : Sublimed >99%  
 Formula :  $C_{40}H_{42}N_2O_4$   
 M.W. : 614.77 g/mole  
 UV : 456, 524 nm (in  $CH_2Cl_2$ )  
 PL : 573 nm (in  $CH_2Cl_2$ )  
 TGA : >390 °C (0.5% weight loss)

**LT-S972** |  $\alpha,\omega$ -DH6T

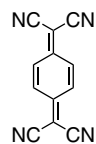
5,5''''-Dihexyl-2,2':5',2''':5'',2''':5''',2''''-sexithiophene

CAS No. : 151271-43-1  
 Grade : Sublimed >99%  
 Formula :  $C_{36}H_{38}S_6$   
 M.W. : 663.08 g/mole  
 PL : 439 nm (in Toluene)  
 TGA : >230 °C (0.5% weight loss)

**LT-S973** | TCNQ

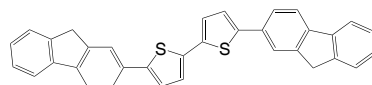
7,7,8,8-Tetracyanoquinodimethane

CAS No. : 1518-16-7  
 Grade : Sublimed >99% (HPLC)  
 Formula :  $C_{12}H_4N_4$   
 M.W. : 204.19 g/mole  
 PL : 259, 404 nm (in  $CH_2Cl_2$ )  
 TGA : >210 °C (0.5% weight loss)

**LT-S975** | FTTF

5,5'-Di(9H-fluoren-2-yl)-2,2'-bithiophene

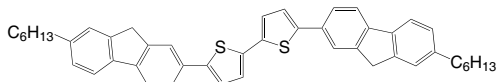
CAS No. : 369599-41-7  
 Grade : Sublimed >99%  
 Formula :  $C_{34}H_{22}S_2$   
 M.W. : 494.67 g/mole  
 PL : 378 nm (in Toluene)  
 TGA : >200 °C (0.5% weight loss)



**LT-S976** | DH-FTTF

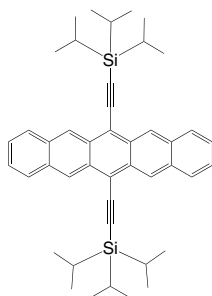
5,5'-Bis(7-hexyl-9H-fluoren-2-yl)-2,2'-bithiophene

CAS No. : 369599-42-8  
 Grade : Sublimed >99%  
 Formula :  $C_{46}H_{46}S_2$   
 M.W. : 662.99 g/mole  
 UV : 378 nm (in Toluene)  
 TGA : >200 °C (0.5% weight loss)

**LT-S977** | TIPS

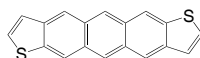
6,13-Bis(triisopropylsilylethynyl)pentacene

CAS No. : 373596-08-8  
 Grade : >99% (HPLC)  
 Formula :  $C_{44}H_{54}Si_2$   
 M.W. : 639.07 g/mole  
 UV : 307 nm (in  $CH_2Cl_2$ )  
 TGA : >230 °C (0.5% weight loss)

**LT-S9026** | ADT

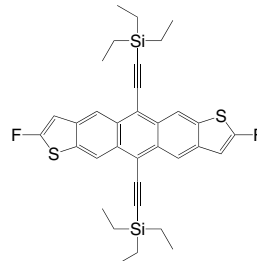
Anthra[2,3-b:6,7-b']dithiophene

CAS No. : 144413-58-1  
 Grade : Sublimed >99%  
 Formula :  $C_{18}H_{10}S_2$   
 M.W. : 290.40 g/mole  
 UV : 320 nm (in  $CH_2Cl_2$ )  
 TGA : >250 °C (0.5% weight loss)

**LT-S9027** | diF-TES-ADT

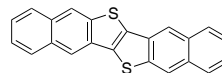
2,8-Difluoro-5,11-bis(triethylsilylethynyl)anthradithiophene, mixture of syn &amp; anti isomers

CAS No. : 1015071-21-2  
 Grade : >99% (NMR)  
 Formula :  $C_{34}H_{36}F_2S_2Si_2$   
 M.W. : 602.95 g/mole  
 TGA : >230 °C (0.5% weight loss)

**LT-S9031** | DNTT

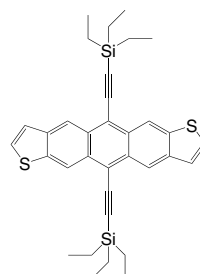
Dinaphtho[2,3-b:2,3'-f]thieno[3,2-b]thiophene

CAS No. : 935280-42-5  
 Grade : Sublimed >99%  
 Formula :  $C_{22}H_{12}S_2$   
 M.W. : 340.46 g/mole  
 TGA : >310 °C (0.5% weight loss)

**LT-S9034** | TES-ADT

5,11-Bis(triethylsilylethynyl)anthradithiophene, mixture of syn &amp; anti isomers

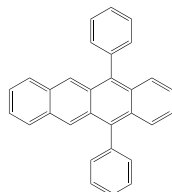
CAS No. : 851817-11-3  
 Grade : >99% (NMR)  
 Formula :  $C_{34}H_{38}S_2Si_2$   
 M.W. : 566.97 g/mole  
 UV : 306 nm (in  $CH_2Cl_2$ )  
 TGA : >230 °C (0.5% weight loss)



**LT-S9035** | DPT

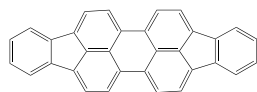
5,12-Diphenyltetracene

CAS No. : 27130-32-1  
 Grade : Sublimed >99% (HPLC)  
 Formula : C<sub>30</sub>H<sub>20</sub>  
 M.W. : 380.48 g/mole  
 UV : 262, 492 nm (in CH<sub>2</sub>Cl<sub>2</sub>)  
 TGA : >230 °C (0.5% weight loss)

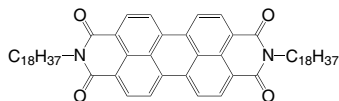
**LT-S9036** | DIP

Diindeno[1,2,3-cd:1',2',3'-lm]perylene

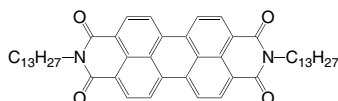
CAS No. : 188-94-3  
 Grade : Sublimed product  
 Formula : C<sub>32</sub>H<sub>16</sub>  
 M.W. : 400.47 g/mole  
 UV : 494, 532 nm (in CH<sub>2</sub>Cl<sub>2</sub>)  
 TGA : >230 °C (0.5% weight loss)

**LT-S9041** | PTCDI-C<sub>18</sub>H<sub>37</sub>*N,N'*-Dioctadecyl-3,4,9,10-perylene dicarboximide

CAS No. : 25834-02-0  
 Grade : Sublimed >99%  
 Formula : C<sub>60</sub>H<sub>82</sub>N<sub>2</sub>O<sub>4</sub>  
 M.W. : 895.30 g/mole  
 UV : 485, 520 nm (in Toluene)  
 TGA : >340 °C (0.5% weight loss)

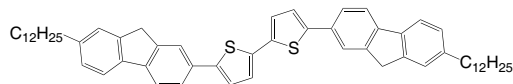
**LT-S9042** | PTCDI-C<sub>13</sub>H<sub>27</sub>*N,N'*-Ditridecyl-3,4,9,10-perylene dicarboximide

CAS No. : 95689-92-2  
 Grade : Sublimed >99%  
 Formula : C<sub>60</sub>H<sub>82</sub>N<sub>2</sub>O<sub>4</sub>  
 M.W. : 755.04 g/mole  
 UV : 484, 520 nm (in Toluene)  
 TGA : >390 °C (0.5% weight loss)

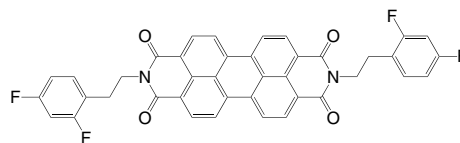
**LT-S9043** | Ddodec-FTTF

5,5'-Bis(7-dodecyl-9H-fluorene-2-yl)-2,2'-bithiophene

CAS No. : 846542-27-6  
 Grade : Sublimed >99%  
 Formula : C<sub>58</sub>H<sub>70</sub>S<sub>2</sub>  
 M.W. : 831.31 g/mole  
 UV : 254, 409 nm (in CH<sub>2</sub>Cl<sub>2</sub>)  
 TGA : >350 °C (0.5% weight loss)

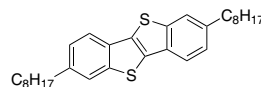
**LT-S9049** | 2,4-FPEPTC*N,N'*-Bis[2-(2,4-difluoro-phenyl)-ethyl]-3,4,9,10-perylene dicarboximide

CAS No. : 1644439-37-1  
 Grade : Sublimed >99%  
 Formula : C<sub>40</sub>H<sub>22</sub>F<sub>4</sub>N<sub>2</sub>O<sub>4</sub>  
 M.W. : 670.61 g/mole  
 UV : 245 nm (in CH<sub>2</sub>Cl<sub>2</sub>)  
 TGA : >340 °C (0.5% weight loss)

**LT-S9054** | C8-BTBT

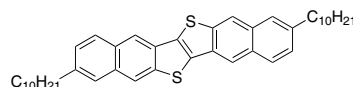
2,7-Dioctyl[1]benzothieno[3,2-b][1]benzothiophene

CAS No. : 583050-70-8  
 Grade : Sublimed >99%  
 Formula : C<sub>30</sub>H<sub>40</sub>S<sub>2</sub>  
 M.W. : 464.77 g/mole

**LT-S9055** | C10-DNTT

2,9-Didecylindaphtho[2,3-b:2',3'-f]thieno[3,2-b]thiophene

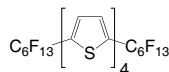
CAS No. : 1169932-40-4  
 Grade : Sublimed >99%  
 Formula : C<sub>42</sub>H<sub>52</sub>S<sub>2</sub>  
 M.W. : 620.99 g/mole



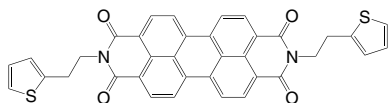
**LT-S9057** | DFH-4T

5,5'-Bis((5-perfluorohexyl)thiophen-2-yl)-2,2'-bithiophene

CAS No. : 446043-85-2  
 Grade : Sublimed >99%  
 Formula :  $C_{28}H_8F_{26}S_4$   
 M.W. : 966.58 g/mole  
 UV : 259, 404 nm (in  $CH_2Cl_2$ )  
 TGA : >220 °C (0.5% weight loss)

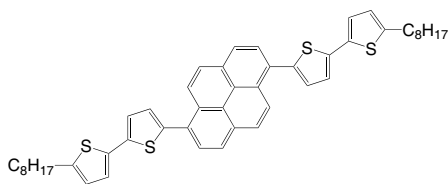
**LT-S9059** | TEPTC*N,N'*-Di(thiophen-2-yl)ethyl-3,4,9,10-perylene dicarboximide

CAS No. : 1559069-50-9  
 Grade : Sublimed >99%  
 Formula :  $C_{36}H_{22}N_2O_4S_2$   
 M.W. : 610.70 g/mole  
 UV : 260 nm (in  $CH_2Cl_2$ )  
 TGA : >400 °C (0.5% weight loss)

**LT-S9077** | BOBTP

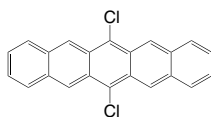
1,6-Bis(5'-octyl-2,2'-bithiophen-5-yl)pyrene

CAS No. : 1430207-54-7  
 Grade : Sublimed >99% (NMR)  
 Formula :  $C_{48}H_{50}S_4$   
 M.W. : 755.17 g/mole  
 UV : 322, 410 nm (in  $CHCl_3$ )

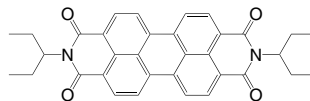
**LT-S9080** | DCP

6,13-Dichloropentacene

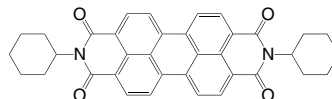
CAS No. : 59156-92-2  
 Grade : Sublimed >99%  
 Formula :  $C_{22}H_{12}Cl_2$   
 M.W. : 347.24 g/mole  
 TGA : >350 °C (0.5% weight loss)

**LT-S9092** | 3PenPTC*N,N'*-Bis(ethylpropyl)perylene-3,4,9,10-tetracarboxylicdiimide

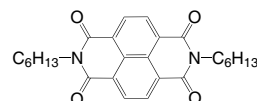
CAS No. : 110590-81-3  
 Grade : Sublimed >99%  
 Formula :  $C_{34}H_{30}N_2O_4$   
 M.W. : 530.61 g/mole  
 TGA : >270 °C (0.5% weight loss)

**LT-S9093** | DCyPTC*N,N'*-Dicyclohexylperylene-3,4,9,10-tetracarboxylicdiimide

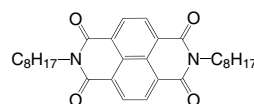
CAS No. : 41572-86-5  
 Grade : Sublimed >99%  
 Formula :  $C_{36}H_{30}N_2O_4$   
 M.W. : 554.63 g/mole  
 TGA : >350 °C (0.5% weight loss)

**LT-S9094** | NTDA- $C_6H_{13}$ 2,7-Diethylbenzo[*lmn*][3,8]phenanthroline-1,3,6,8(2*H*,7*H*)-tetraone

CAS No. : 23536-15-4  
 Grade : Sublimed >99% (HPLC)  
 Formula :  $C_{26}H_{30}N_2O_4$   
 M.W. : 434.53 g/mole  
 TGA : >250 °C (0.5% weight loss)

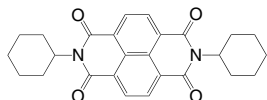
**LT-S9095** | NTDA- $C_8H_{17}$ 2,7-Dioctylbenzo[*lmn*][3,8]phenanthroline-1,3,6,8(2*H*,7*H*)-tetraone

CAS No. : 34155-21-0  
 Grade : Sublimed >99% (HPLC)  
 Formula :  $C_{30}H_{38}N_2O_4$   
 M.W. : 490.63 g/mole  
 TGA : >280 °C (0.5% weight loss)

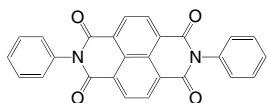


**LT-S9096** | DCyNTDA2,7-Dicyclohexylbenzo[*lmn*][3,8]phenanthroline-1,3,6,8(2*H*,7*H*)-tetraone

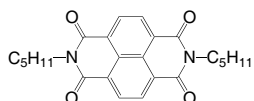
CAS No. : 173409-43-3  
 Grade : Sublimed >99% (HPLC)  
 Formula : C<sub>26</sub>H<sub>26</sub>N<sub>2</sub>O<sub>4</sub>  
 M.W. : 430.50 g/mole  
 TGA : >280 °C (0.5% weight loss)

**LT-S9097** | DPNTDA2,7-Diphenylbenzo[*lmn*][3,8]phenanthroline-1,3,6,8(2*H*,7*H*)-tetraone

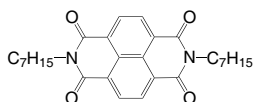
CAS No. : 24259-89-0  
 Grade : Sublimed >99%  
 Formula : C<sub>26</sub>H<sub>14</sub>N<sub>2</sub>O<sub>4</sub>  
 M.W. : 418.40 g/mole  
 TGA : >280 °C (0.5% weight loss)

**LT-S9098** | NTDA-C<sub>5</sub>H<sub>11</sub>2,7-Dipentylbenzo[*lmn*][3,8]phenanthroline-1,3,6,8(2*H*,7*H*)-tetraone

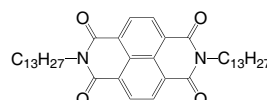
CAS No. : 173409-41-1  
 Grade : Sublimed >99% (HPLC)  
 Formula : C<sub>24</sub>H<sub>26</sub>N<sub>2</sub>O<sub>4</sub>  
 M.W. : 406.47 g/mole  
 TGA : >240 °C (0.5% weight loss)

**LT-S9099** | NTDA-C<sub>7</sub>H<sub>15</sub>2,7-Diheptylbenzo[*lmn*][3,8]phenanthroline-1,3,6,8(2*H*,7*H*)-tetraone

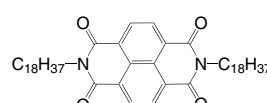
CAS No. : 698370-78-4  
 Grade : Sublimed >99%  
 Formula : C<sub>28</sub>H<sub>34</sub>N<sub>2</sub>O<sub>4</sub>  
 M.W. : 462.58 g/mole  
 TGA : >280 °C (0.5% weight loss)

**LT-S9100** | NTDA-C<sub>13</sub>H<sub>27</sub>2,7-Ditridecylbenzo[*lmn*][3,8]phenanthroline-1,3,6,8(2*H*,7*H*)-tetraone

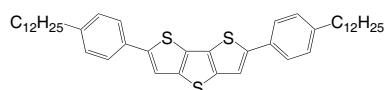
CAS No. : 1373274-00-0  
 Grade : Sublimed >99%  
 Formula : C<sub>40</sub>H<sub>58</sub>N<sub>2</sub>O<sub>4</sub>  
 M.W. : 630.90 g/mole  
 TGA : >280 °C (0.5% weight loss)

**LT-S9101** | NTDA-C<sub>18</sub>H<sub>37</sub>2,7-Dioctadecylbenzo[*lmn*][3,8]phenanthroline-1,3,6,8(2*H*,7*H*)-tetraone

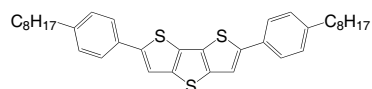
CAS No. : 144742-50-7  
 Grade : Sublimed >99% (HPLC)  
 Formula : C<sub>50</sub>H<sub>78</sub>N<sub>2</sub>O<sub>4</sub>  
 M.W. : 771.17 g/mole  
 TGA : >280 °C (0.5% weight loss)

**LT-S9102** | DTT-122,6-Bis(4-dodecylphenyl)-dithieno[3,2-*b*:2',3'-*d'*]thiophene

CAS No. : 1446140-70-0  
 Grade : Sublimed >99% (NMR)  
 Formula : C<sub>44</sub>H<sub>60</sub>S<sub>3</sub>  
 M.W. : 685.14 g/mole  
 TGA : >280 °C (0.5% weight loss)

**LT-S9103** | DTT-82,6-Bis(4-octylphenyl)-dithieno[3,2-*b*:2',3'-*d'*]thiophene

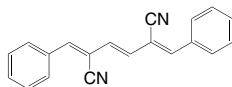
CAS No. : 1429377-95-6  
 Grade : Sublimed >99% (NMR)  
 Formula : C<sub>36</sub>H<sub>44</sub>S<sub>3</sub>  
 M.W. : 572.93 g/mole  
 TGA : >270 °C (0.5% weight loss)



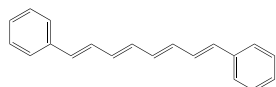


**LT-S9128** | Dp-triene-2,5-CN*(2Z,3E,5Z)*-2,5-Dibenzylidenehex-3-enedinitrile

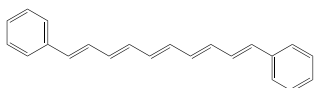
CAS No. : 1376166-32-3  
 Grade : >99%  
 Formula :  $C_{20}H_{14}N_2$   
 M.W. : 282.34 g/mole

**LT-S9129** | Dp-tetraene*(1E,3E,5E,7E)*-1,8-Diphenylocta-1,3,5,7-tetraene

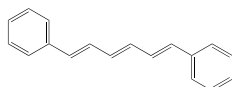
CAS No. : 3029-40-1  
 Grade : >99%  
 Formula :  $C_{20}H_{18}$   
 M.W. : 258.36 g/mole

**LT-S9130** | Dp-pentaene*(1E,3E,5E,7E,9E)*-1,10-Diphenyldeca-1,3,5,7,9-pentaene

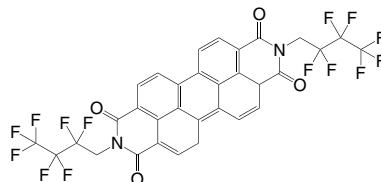
CAS No. : 3029-41-2  
 Grade : >99%  
 Formula :  $C_{22}H_{20}$   
 M.W. : 284.39 g/mole

**LT-S9131** | Dp-triene*(1E,3E,5E)*-1,6-Diphenylhexa-1,3,5-triene

CAS No. : 1720-32-7  
 Grade : >99%  
 Formula :  $C_{18}H_{16}$   
 M.W. : 232.32 g/mole

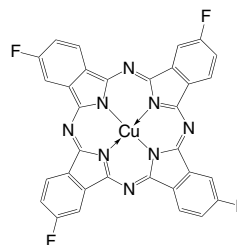
**LT-S9132** | PTCPI- $CH_2C_3F_7$ *N,N'*-Bis(2,2,3,3,4,4,4-heptafluorobutyl)-3,4,9,10-perylene dicarboximide

CAS No. : 1150578-28-1  
 Grade : Sublimed >99%  
 Formula :  $C_{32}H_{12}F_{14}N_2O_4$   
 M.W. : 756.44 g/mole  
 TGA : >300 °C (0.5% weight loss)

**LT-S9134** |  $F_4CuPC$ 

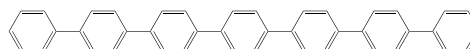
Copper(II)-2,9,16,23-tetrafluoro-29H,31H-phthalocyanine

CAS No. : 65602-84-8  
 Grade : Sublimed >99%  
 Formula :  $C_{32}H_{12}CuF_4N_8$   
 M.W. : 648.03 g/mole  
 TGA : >350 °C (0.5% weight loss)

**LT-S9159** | p-Septiphenyl

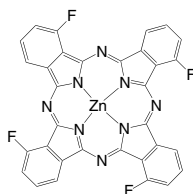
p-Septiphenyl

CAS No. : 70352-20-4  
 Grade : >99%  
 Formula :  $C_{42}H_{30}$   
 M.W. : 534.69 g/mole  
 TGA : >280 °C (0.5% weight loss)

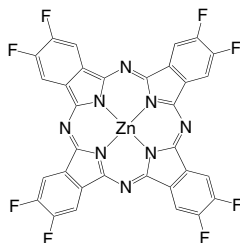


**LT-S9171** | F<sub>4</sub>ZnPCZinc(II)-1,8,15,22-tetrafluoro-29*H*,31*H*-phthalocyanine, mixture of isomers

CAS No.	: 1120355-28-3
Grade	: Sublimed >99%
Formula	: C <sub>32</sub> H <sub>12</sub> F <sub>4</sub> N <sub>8</sub> Zn
M.W.	: 649.89 g/mole
UV	: 681 nm (in CHCl <sub>3</sub> )
TGA	: >300 °C (0.5% weight loss)

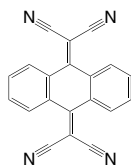
**LT-S9172** | F<sub>8</sub>ZnPCZinc(II)-2,3,9,10,16,17,23,24-octafluoro-29*H*,31*H*-phthalocyanine

CAS No.	: 676519-80-5
Grade	: Sublimed >99%
Formula	: C <sub>32</sub> H <sub>8</sub> F <sub>8</sub> N <sub>8</sub> Zn
M.W.	: 721.86 g/mole
UV	: 338, 656 nm (in DMF)
TGA	: >300 °C (0.5% weight loss)

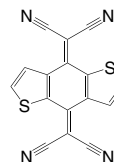
**LT-S9173** | An-PDN

2,2'-(9,10-Anthracenediylidene)-bis-propanedinitrile

CAS No.	: 70359-39-6
Grade	: Sublimed >99% (HPLC)
Formula	: C <sub>20</sub> H <sub>8</sub> N <sub>4</sub>
M.W.	: 304.3 g/mole
UV	: 283, 348 nm (in CHCl <sub>3</sub> )
TGA	: >250 °C (0.5% weight loss)

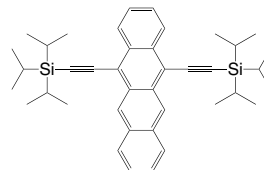
**LT-S9174** | DTTCNQ2,2'-Benzo[1,2-*b*:4,5-*b'*]dithiophene-4,8-diylidene-bis-propanedinitrile

CAS No.	: 109573-90-2
Grade	: Sublimed >99% (HPLC)
Formula	: C <sub>16</sub> H <sub>4</sub> N <sub>4</sub> S <sub>2</sub>
M.W.	: 316.36 g/mole
UV	: 231, 438 nm (in CHCl <sub>3</sub> )
TGA	: >250 °C (0.5% weight loss)

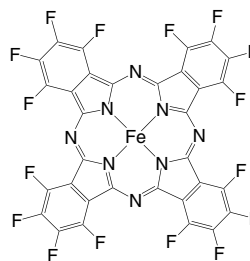
**LT-S9175** | 5,12-TIPS-Tetracene

5,12-Bis((triisopropylsilyl)ethynyl)tetracene

CAS No.	: 628316-50-7
Grade	: >99% (NMR)
Formula	: C <sub>40</sub> H <sub>52</sub> Si <sub>2</sub>
M.W.	: 589.01 g/mole
UV	: 389 nm (in CH <sub>2</sub> Cl <sub>2</sub> )
TGA	: >250 °C (0.5% weight loss)

**LT-S9177** | F<sub>16</sub>FePCIron(II) 1,2,3,4,8,9,10,11,15,16,17,18,22,23,24,25-hexadecafluoro-29*H*,31*H*-phthalocyanine

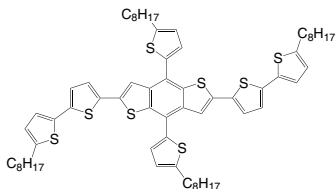
CAS No.	: 23844-93-1
Grade	: Sublimed >99%
Formula	: C <sub>32</sub> F <sub>16</sub> FeN <sub>8</sub>
M.W.	: 856.22 g/mole
UV	: 333, 627 nm (in Acetone)
TGA	: >300 °C (0.5% weight loss)



## LT-S9179 | BDT2TH

2,6-Bis[(5'-octyl[2,2'-bithiophene])[4,8-bis(5-octyl-2-thienyl)benzo[1,2-*b*,4,5-*b'*]dithiophene]

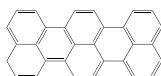
Grade : >99% (NMR)  
 Formula :  $C_{66}H_{82}S_8$   
 M.W. : 1131.88 g/mole  
 UV : 249, 359, 442 nm (in  $CHCl_3$ )



## LT-S9211 | DTT-8

Tribenzo[*de,kl,rst*]pentaphene

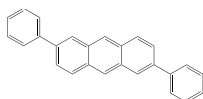
CAS No. : 188-72-7  
 Grade : >98% (NMR)  
 Formula :  $C_{30}H_{16}$   
 M.W. : 376.45 g/mole



## LT-S9213 | DPA

2,6-Diphenylanthracene

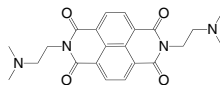
CAS No. : 95950-70-2  
 Grade : Sublimed >99% (HPLC)  
 Formula :  $C_{26}H_{18}$   
 M.W. : 330.42 g/mole  
 TGA : >200 °C (0.5% weight loss)



## LT-S9259

2,7-Bis(2-(dimethylamino)ethyl)benzo[*mn*][3,8]phenanthroline-1,3,6,8(2*H*,7*H*)-tetraone

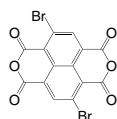
CAS No. : 22291-04-9  
 Grade : Sublimed >99% (HPLC)  
 Formula :  $C_{22}H_{24}N_4O_4$   
 M.W. : 408.45 g/mole



## LT-S9260

4,9-Dibromo-iso-chromeno[6,5,4-*def*]isochromene-1,3,6,8-tetraone

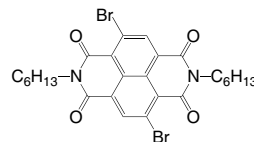
CAS No. : 83204-68-6  
 Grade : >80%  
 Formula :  $C_{14}H_2Br_2O_6$   
 M.W. : 425.97 g/mole



## LT-S9261

4,9-Dibromo-2,7-dihexylbenzo[*mn*][3,8]phenanthroline-1,3,6,8-tetraone

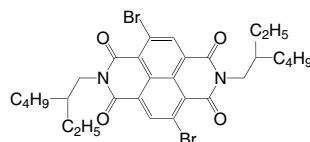
CAS No. : 1239327-73-1  
 Formula :  $C_{26}H_{28}Br_2N_2O_4$   
 M.W. : 592.32 g/mole



## LT-S9262

4,9-Dibromo-2,7-bis(2-ethylhexyl)benzo[*mn*][3,8]phenanthroline-1,3,6,8(2*H*,7*H*)-tetraone

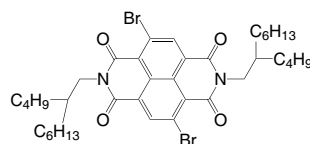
CAS No. : 1088205-02-0  
 Formula :  $C_{30}H_{36}Br_2N_2O_4$   
 M.W. : 648.43 g/mole



## LT-S9263

4,9-Dibromo-2,7-bis(2-butyl-octyl)benzo[*mn*][3,8]phenanthroline-1,3,6,8(2*H*,7*H*)-tetraone

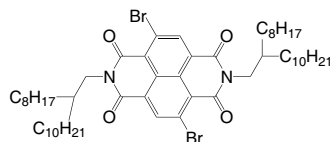
CAS No. : 1614253-96-1  
 Formula :  $C_{38}H_{52}Br_2N_2O_4$   
 M.W. : 760.64 g/mole



## LT-S9264

4,9-Dibromo-2,7-bis(2-octyl-dodecyl)benzo[*mn*][3,8]phenanthroline-1,3,6,8(2*H*,7*H*)-tetraone

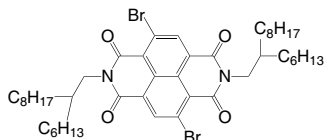
CAS No. : 1100243-35-3  
 Formula :  $C_{54}H_{84}Br_2N_2O_4$   
 M.W. : 985.06 g/mole



## LT-S9265

4,9-Dibromo-2,7-bis(2-hexyldecyl)benzo[*lmn*][3,8]phenanthroline-1,3,6,8(2*H*,7*H*)-tetraone

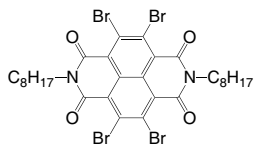
CAS No. : 1459168-68-3  
 Grade : >98% (HPLC)  
 Formula :  $C_{46}H_{68}Br_2N_2O_4$   
 M.W. : 872.85 g/mole



## LT-S9267

4,5,9,10-Tetrabromo-2,7-dioctylbenzo[*lmn*][3,8]phenanthroline-1,3,6,8-tetraone

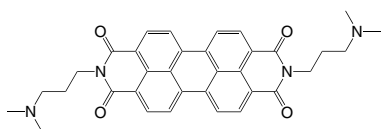
CAS No. : 954374-43-7  
 Formula :  $C_{30}H_{34}Br_4N_2O_4$   
 M.W. : 806.22 g/mole



## LT-S9268 PDIN

2,9-Bis(3-(dimethylamino)propyl)anthra[2,1,9-*def*:6,5,10-*d'e'f'*]diisoquinoline-1,3,8,10(2*H*,9*H*)-tetraone

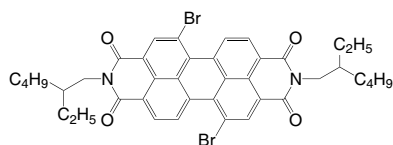
CAS No. : 117901-97-0  
 Formula :  $C_{34}H_{32}N_4O_4$   
 M.W. : 560.64 g/mole  
 HOMO : -6.05 eV  
 LUMO : -3.72 eV



## LT-S9269

5,12-Dibromo-2,9-bis(2-ethylhexyl)anthra[2,1,9-*def*:6,5,10-*d'e'f'*]diisoquinoline-1,3,8,10(2*H*,9*H*)-tetraone

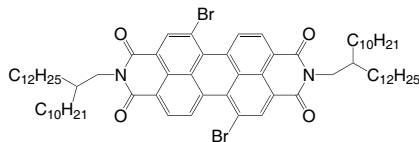
CAS No. : 851786-15-7  
 Formula :  $C_{40}H_{40}Br_2N_2O_4$   
 M.W. : 772.56 g/mole



## LT-S9270

5,12-Dibromo-2,9-bis(2-decyltetradecyl)anthra[2,1,9-*def*:6,5,10-*d'e'f'*]diisoquinoline-1,3,8,10(2*H*,9*H*)-tetraone

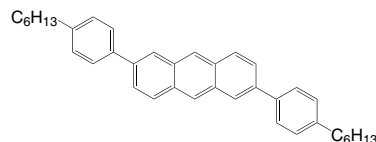
CAS No. : 909019-78-9  
 Formula :  $C_{72}H_{104}Br_2N_2O_4$   
 M.W. : 1221.42 g/mole



## LT-S9285 C6-DPA

2,6-Bis(4-hexylphenyl)anthracene

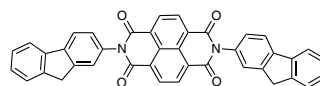
CAS No. : 1258209-99-2  
 Grade : Sublimed >99%  
 Formula :  $C_{38}H_{42}$   
 M.W. : 498.74 g/mole  
 TGA : >260 °C (0.5% weight loss)



## LT-S9500 Bis-HFI-NTCDI

2,7-Di(9*H*-fluoren-2-yl)benzo[*lmn*][3,8]-phenanthroline-1,3,6,8(2*H*,7*H*)-tetraone

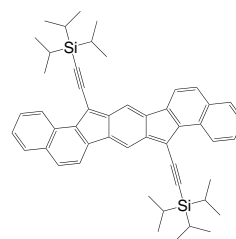
CAS No. : 1397188-84-9  
 Grade : Sublimed >99%  
 Formula :  $C_{40}H_{22}N_2O_4$   
 M.W. : 594.61 g/mole  
 EA : 3.5 eV  
 Conductivity :  $1.3 \times 10^{-4}$  S/cm



## LT-S9540 TIPS anti DNI

8,16-Bis((triisopropylsilyl)ethynyl)benzo[*a*]benzo[4,5]indeno[2,1-*h*]fluorine

CAS No. : 2080320-19-8  
 Grade : >99% (HPLC)  
 Formula :  $C_{50}H_{56}Si_2$   
 M.W. : 713.15 g/mole  
 Hole Mobility :  $7.1 \text{ cm}^2 / \text{Vs}$



**NEW**

### LT-S9538 | cis-cis TFT-CN and cis-trans TFT-CN

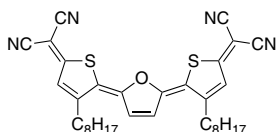
2,2'-((5Z,5'Z)-5,5'-(furan-2,5-diylidene)bis(4-octylthiophene-5,2(5H)-diylidene))dimalononitrile, mixture of isomers

CAS No. : 1938123-97-7 and 1938123-98-8

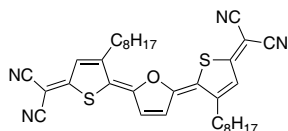
Grade : >98% (HPLC)

Formula :  $C_{34}H_{38}N_4OS_2$

M.W. : 582.82 g/mole



+



### LT-S9541 | C13-BTBT

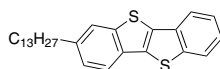
2-Tridecyl-[1]benzothieno[3,2-b][1]benzothiophene

CAS No. : 1198290-20-8

Grade : Sublimed >99% (HPLC)

Formula :  $C_{27}H_{34}S_2$

M.W. : 422.69 g/mole



### LT-S9548 | BPE-PMDI

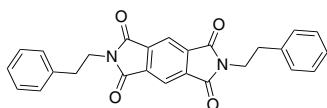
**NEW**

2,6-diphenethylpyrrolo[3,4-f]isoindole-1,3,5,7(2H,6H)-tetraone

Grade : Sublimed >99%

Formula :  $C_{26}H_{20}N_2O_4$

M.W. : 424.45 g/mole



### LT-S9549 | C8-PMDI

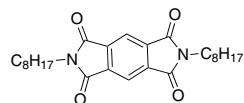
**NEW**

2,6-Dioctylpyrrolo[3,4-f]isoindole-1,3,5,7(2H,6H)-tetraone

Grade : Sublimed >99% (HPLC)

Formula :  $C_{26}H_{36}N_2O_4$

M.W. : 440.58 g/mole



### LT-S9551 | NTDA-C16H33

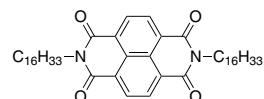
**NEW**

2,7-Dihexadecylbenzo[Imn][3,8]phenanthroline-1,3,6,8(2H,7H)-tetraone

Grade : Sublimed >99% (HPLC)

Formula :  $C_{46}H_{70}N_2O_4$

M.W. : 715.06 g/mole



### LT-S9552 | TIPS-anthracene

**NEW**

9,10-Bis((triisopropylsilyl)ethynyl)anthracene

CAS No. : 862667-06-9

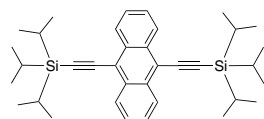
Grade : >99% (HPLC)

Formula :  $C_{36}H_{50}Si_2$

M.W. : 538.95 g/mole

HOMO : -5.6 eV

LUMO : -2.9 eV



### LT-S9553 | DPTTA

2,13-Diphenyl-23,24,25,26-tetrathiapentacyclo-[1,8,2,1,13,6,19,12,14,17]hexacos-1,3,5,7,9,11,13,15,17,19,21-undecaene

CAS No. : 1265748-61-5

Grade : >99%

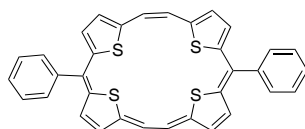
Formula :  $C_{34}H_{22}S_4$

M.W. : 558.80 g/mole

UV : 319, 401 nm (Toluene)

HOMO : -4.42 eV

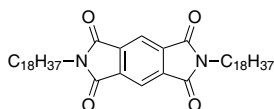
LUMO : -2.51 eV



**LT-S9554** | C18-PMDI **NEW**

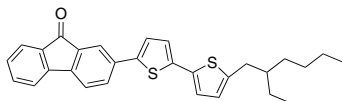
2,6-Dioctadecylpyrrolo[3,4-f]isoindole-1,3,5,7(2H,6H)-tetraone

Grade : Sublimed >99%  
 Formula :  $C_{46}H_{76}N_2O_4$   
 M.W. : 721.11 g/mole

**LT-S9561**

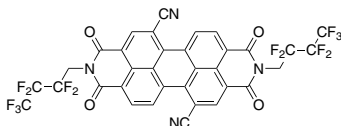
2-(5'-(2-Ethylhexyl)-[2,2'-bithiophen]-5-yl)-9H-fluoren-9-one

CAS No. : 2499491-20-0  
 Grade : >99%  
 Formula :  $C_{29}H_{28}OS_2$   
 M.W. : 456.66 g/mole  
 UV : 252, 302 nm ( $CHCl_3$ )  
 HOMO : -5.17 eV  
 LUMO : -2.89 eV

**LT-S9579** | PDIF-CN2

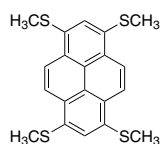
2,9-Bis(2,2,3,3,4,4,4-heptafluorobutyl)-1,3,8,10-tetraoxo-1,2,3,8,9,10-hexahydroanthra[2,1,9-def,6,5,10-d'e'f']diisoquinoline-5,12-Dicarbonitrile, mixture of isomers

CAS No. : 844868-47-9  
 Grade : Sublimed >97%  
 Formula :  $C_{34}H_{10}F_{14}N_4O_4$   
 M.W. : 804.45 g/mole  
 HOMO : -6.8 eV  
 LUMO : -4.50 eV

**LT-S9580** | MT-pyrene **NEW**

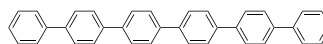
1,3,6,8-Tetrakis(methylthio)pyrene

Grade : Sublimed >99%  
 Formula :  $C_{20}H_{18}S_4$   
 M.W. : 386.62 g/mole

**LT-S9586** | p-6P

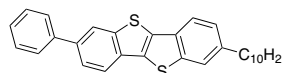
p-Sexiphenyl

CAS No. : 4499-83-6  
 Grade : Sublimed >99%  
 Formula :  $C_{36}H_{26}$   
 M.W. : 458.59 g/mole  
 HOMO : -5.6 eV  
 LUMO : -1.8 eV

**LT-S9587** | Ph-BTBT-10

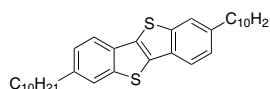
2-Decyl-7-phenyl[1]benzothieno[3,2-b][1]benzothiophene

CAS No. : 1398395-83-9  
 Grade : Sublimed >99% (HPLC)  
 Formula :  $C_{30}H_{32}S_2$   
 M.W. : 456.71 g/mole

**LT-S9592** | C10-BTBT

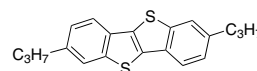
2,7-Didecyl[1]benzothieno[3,2-b][1]benzothiophene

CAS No. : 583050-71-9  
 Grade : Sublimed >99% (HPLC)  
 Formula :  $C_{34}H_{48}S_2$   
 M.W. : 520.87 g/mole

**LT-S9593** | C3-BTBT

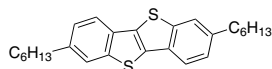
2,7-Dipropyl-4b,9b-dihydrobenzo[b]benzo[4,5]thieno[2,3-d]thiophene

CAS No. : 1198290-38-8  
 Grade : Sublimed >99%  
 Formula :  $C_{20}H_{20}S_2$   
 M.W. : 324.5 g/mole

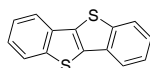


**LT-S9594** | C6-BTBT2,7-Dihexyl-4*b*,9*b*-dihydrobenzo[*b*]benzo[4,5]thieno[2,3-*d*]thiophene

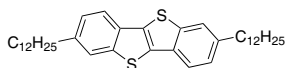
CAS No. : 583050-69-5  
 Grade : Sublimed > 99% (HPLC)  
 Formula : C<sub>26</sub>H<sub>32</sub>S<sub>2</sub>  
 M.W. : 408.66 g/mole

**LT-S9595** | BTBTBenzo[*b*]benzo[4,5]thieno[2,3-*d*]thiophene

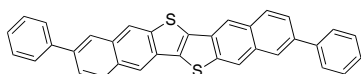
CAS No. : 248-70-4  
 Grade : Sublimed > 99% (HPLC)  
 Formula : C<sub>14</sub>H<sub>8</sub>S<sub>2</sub>  
 M.W. : 240.34 g/mole

**LT-S9596** | C12-BTBT2,7-Didodecylbenzo[*b*]benzo[4,5]thieno[2,3-*d*]thiophene

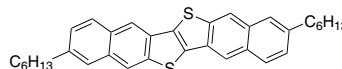
CAS No. : 473723-54-5  
 Grade : Sublimed > 99%  
 Formula : C<sub>38</sub>H<sub>56</sub>S<sub>2</sub>  
 M.W. : 576.98 g/mole

**LT-S9597** | DPh-DNTT2,9-Diphenyl-dinaphtho[2,3-*b*:2',3'-*f*]thieno[3,2-*b*]thiophene

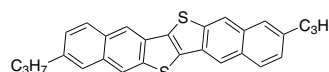
CAS No. : 1310198-13-0  
 Grade : Sublimed > 99%  
 Formula : C<sub>34</sub>H<sub>20</sub>S<sub>2</sub>  
 M.W. : 492.65 g/mole

**LT-S9598** | C6-DNTT2,9-Dihexylnaphtho[2,3-*b*]naphtho[2',3':4,5]thieno[2,3-*d*]thiophene

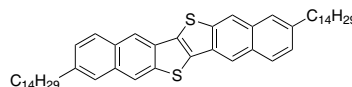
CAS No. : 1242239-89-9  
 Grade : Sublimed > 99%  
 Formula : C<sub>34</sub>H<sub>36</sub>S<sub>2</sub>  
 M.W. : 508.78 g/mole

**LT-S9599** | C3-DNTT2,9-Dipropylnaphtho[2,3-*b*]naphtho[2',3':4,5]thieno[2,3-*d*]thiophene

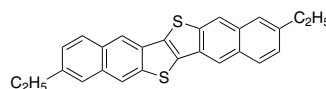
CAS No. : 1242239-91-3  
 Grade : Sublimed > 99%  
 Formula : C<sub>28</sub>H<sub>24</sub>S<sub>2</sub>  
 M.W. : 424.62 g/mole

**LT-S9600** | C14-DNTT2,9-Ditetradecylnaphtho[2,3-*b*]naphtho[2',3':4,5]thieno[2,3-*d*]thiophene

Grade : Sublimed > 99%  
 Formula : C<sub>50</sub>H<sub>68</sub>S<sub>2</sub>  
 M.W. : 733.2 g/mole

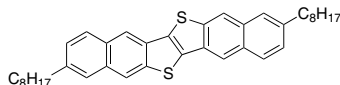
**LT-S9601** | C2-DNTT2,9-Diethylnaphtho[2,3-*b*]naphtho[2',3':4,5]thieno[2,3-*d*]thiophene

Grade : Sublimed > 99%  
 Formula : C<sub>26</sub>H<sub>20</sub>S<sub>2</sub>  
 M.W. : 396.57 g/mole

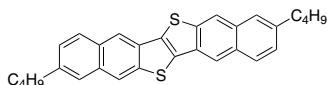


**LT-S9602** | C8-DNTT2,9-Dioctylnaphtho[2,3-*b*]naphtho[2',3':4,5]thieno[2,3-*d*]thiophene

Grade : Sublimed >99% (HPLC)  
 Formula : C<sub>38</sub>H<sub>44</sub>S<sub>2</sub>  
 M.W. : 564.89 g/mole

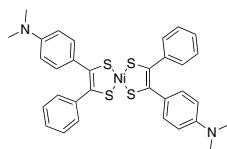
**LT-S9603** | C4-DNTT2,9-Dibutyl naphtho[2,3-*b*]naphtho[2',3':4,5]thieno[2,3-*d*]thiophene

Grade : Sublimed >99% (HPLC)  
 Formula : C<sub>30</sub>H<sub>28</sub>S<sub>2</sub>  
 M.W. : 452.67 g/mole

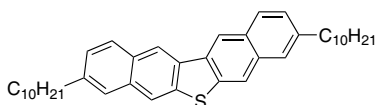
**LT-S9605** | BDN

Bis[1-(4-dimethylamino)phenyl-2-phenyl-1,2-ethenedithiolato]nickel(II)

CAS No. : 38465-55-3  
 Grade : >98%  
 Formula : C<sub>32</sub>H<sub>30</sub>N<sub>2</sub>NiS<sub>4</sub>  
 M.W. : 629.55 g/mole

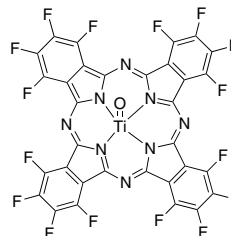
**LT-S9621** | C10-DNT3,9-Didecylidnaphtho[2,3-*b*:2',3'-*d*]thiophene

CAS No. : 1451918-60-7  
 Grade : Sublimed >99%  
 Formula : C<sub>40</sub>H<sub>52</sub>S  
 M.W. : 564.91 g/mole

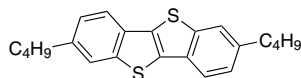
**LT-S9624** | F16TiOPc**NEW**

Titanium oxide-1,2,3,4,8,9,10,11,15,16,17,18,22,23,24,25-hexadecafluoro phthalocyanine

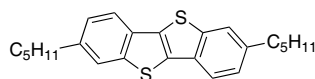
CAS No. : 115537-98-9  
 Grade : Sublimed >99%  
 Formula : C<sub>32</sub>F<sub>16</sub>N<sub>8</sub>O<sub>4</sub>Ti  
 M.W. : 864.24 g/mole

**LT-S9629** | C4-BTBT2,7-Dibutyl[1]benzothieno[3,2-*b*]benzothiophene

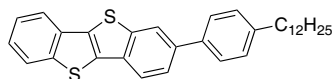
CAS No. : 1198290-40-2  
 Grade : Sublimed >99%  
 Formula : C<sub>22</sub>H<sub>24</sub>S<sub>2</sub>  
 M.W. : 352.56 g/mole

**LT-S9630** | C5-BTBT2,7-Dipentyl[1]benzothieno[3,2-*b*]benzothiophene

CAS No. : 1003601-76-0  
 Grade : Sublimed >99%  
 Formula : C<sub>24</sub>H<sub>28</sub>S<sub>2</sub>  
 M.W. : 380.61 g/mole

**LT-S9631** | C12-Ph-BTBT2-(4-Dodecylphenyl) [1]benzothieno[3,2-*b*]benzothiophene

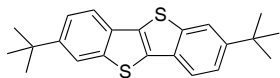
CAS No. : 1398395-77-1  
 Grade : Sublimed >99%  
 Formula : C<sub>32</sub>H<sub>36</sub>S<sub>2</sub>  
 M.W. : 484.76 g/mole



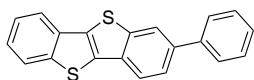


**LT-S9632** | ditBu-BTBT2,7-Di-tert-butyl-[1]benzothieno[3,2-*b*]benzothiophene

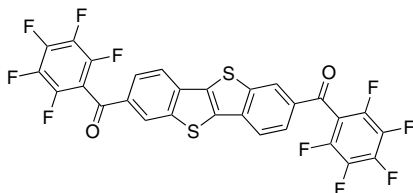
CAS No. : 1198290-42-4  
 Grade : Sublimed >99%  
 Formula :  $C_{22}H_{24}S_2$   
 M.W. : 352.56 g/mole

**LT-S9633** | Ph-BTBT2-Phenyl[1]benzothieno[3,2-*b*]benzothiophene

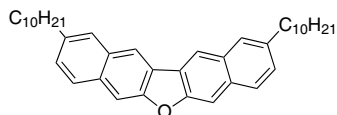
CAS No. : 1801421-69-1  
 Grade : Sublimed >99%  
 Formula :  $C_{20}H_{12}S_2$   
 M.W. : 316.44 g/mole

**LT-S9634** | D(PhFCO)-BTBT2,7-Diylbis(perfluorophenyl)methanone[1]benzothieno[3,2-*b*]benzothiophene

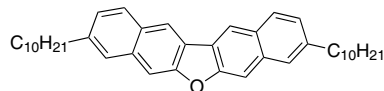
CAS No. : 2366264-40-4  
 Grade : Sublimed >99%  
 Formula :  $C_{28}H_6F_{10}O_2S_2$   
 M.W. : 628.46 g/mole

**LT-S9635** | C10-DNF-VV2,10-Didecyldinaphtho[2,3-*b*:2',3'-*d*]furan

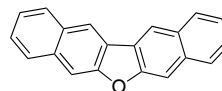
CAS No. : 1451918-45-8  
 Grade : Sublimed >99%  
 Formula :  $C_{40}H_{52}O$   
 M.W. : 548.84 g/mole

**LT-S9636** | C10-DNF-VV3,9-Didecyldinaphtho[2,3-*b*:2',3'-*d*]furan

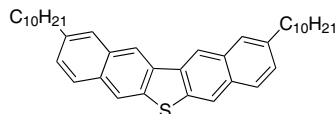
CAS No. : 1451918-51-6  
 Grade : Sublimed >99%  
 Formula :  $C_{40}H_{52}O$   
 M.W. : 548.84 g/mole

**LT-S9637** | DNF-VDinaphtho[2,3-*b*:2',3'-*d*]furan

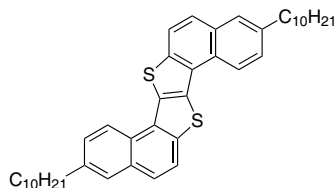
CAS No. : 242-51-3  
 Grade : Sublimed >99%  
 Formula :  $C_{20}H_{12}O$   
 M.W. : 268.31 g/mole

**LT-S9638** | C10-DNT-VV2,10-Didecyldinaphtho[2,3-*b*:2',3'-*d*]thiophene

CAS No. : 1451918-48-1  
 Grade : Sublimed >99%  
 Formula :  $C_{40}H_{52}S$   
 M.W. : 564.91 g/mole

**LT-S9639** | S-DNTT-103,10-Didecylnaphtho[2,1-*b*]naphtho[1',2':4,5]thieno[2,3-*d*]thiophene

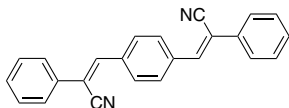
CAS No. : 2648594-24-3  
 Grade : Sublimed >99%  
 Formula :  $C_{42}H_{52}S_2$   
 M.W. : 620.99 g/mole



**LT-S9640** | CNDSB **NEW**

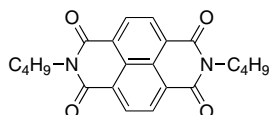
(2Z,2'Z)-3,3'-(1,4-phenylene)bis(2-phenylacrylonitrile)

Grade : > 99%  
 Formula :  $C_{24}H_{16}N_2$   
 M.W. : 332.4 g/mole

**LT-S9642** | NTDA-C4H9 **NEW**

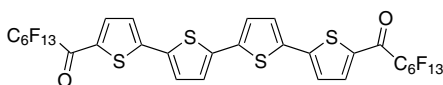
2,7-Dibutylbenzo[Imn][3,8]phenanthroline-1,3,6,8(2H,7H)-tetraone

Grade : Sublimed > 99%  
 Formula :  $C_{22}H_{22}N_2O_4$   
 M.W. : 378.42 g/mole

**LT-S9655** | DFHCO-4T **NEW**

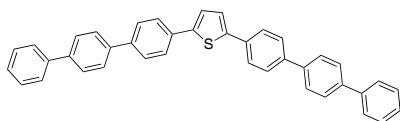
5,5''-Diperfluorohexylcarbonyl-2,2':5'2'':5'',2''-quaterthiophene

CAS No. : 796994-57-5  
 Grade : Sublimed > 99%  
 Formula :  $C_{30}H_8F_{26}O_2S_4$   
 M.W. : 1022.6 g/mole

**LT-S9663** | **NEW**

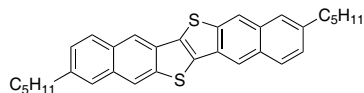
2,5-Bis[4-(4-phenylphenyl)phenyl]thiophene

CAS No. : 1257544-69-6  
 Grade : Sublimed > 99%  
 Formula :  $C_{40}H_{28}S$   
 M.W. : 540.72 g/mole

**LT-S9664** | C5-DNTT **NEW**

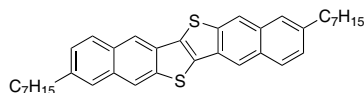
2,9-Dipentylnaphtho[2,3-b]naphtho[2',3':4,5]thieno[2,3-d]thiophene

Grade : Sublimed > 99%  
 Formula :  $C_{32}H_{32}S_2$   
 M.W. : 480.73 g/mole

**LT-S9665** | C7-DNTT **NEW**

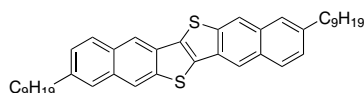
2,9-Diheptylnaphtho[2,3-b]naphtho[2',3':4,5]thieno[2,3-d]thiophene

Grade : Sublimed > 99%  
 Formula :  $C_{36}H_{40}S_2$   
 M.W. : 536.83 g/mole

**LT-S9666** | C9-DNTT **NEW**

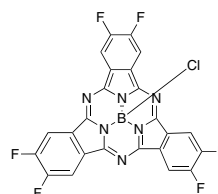
2,9-Dinonylnaphtho[2,3-b]naphtho[2',3':4,5]thieno[2,3-d]thiophene

Grade : Sublimed > 99%  
 Formula :  $C_{40}H_{48}S_2$   
 M.W. : 592.94 g/mole

**LT-S9668** | F6-SubPC-Cl **NEW**

Hexafluoro boron subphthalocyanine chloride

Grade : > 95%  
 Formula :  $C_{24}H_6BClF_6N_6$   
 UV : 552 nm M.W. : 538.6 g/mole  
 HOMO : -5.8 eV  
 LUMO : -3.6 eV  
 Solvent : DCM



**LT-S9669** | BP1T-CN **NEW**

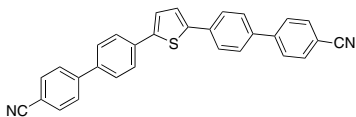
2,5-Bis(4'-cyanobiphenyl-4-yl)thiophene

CAS No. :868403-91-2

Grade :Sublimed &gt;99%

Formula :C<sub>30</sub>H<sub>18</sub>N<sub>2</sub>S

M.W. :438.54 g/mole

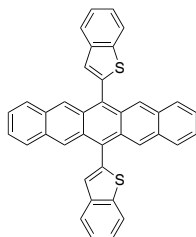
**LT-S9686** | **NEW**

6,13-bis(benzo[b]thiophen-2-yl)pentacene

Grade :Sublimed &gt;98%

Formula :C<sub>38</sub>H<sub>22</sub>S<sub>2</sub>

M.W. :542.71 g/mole

**LT-S9708** | BP1T **NEW**

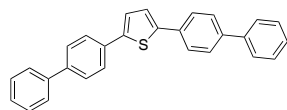
2,5-Bis(4-biphenyl)thiophene

CAS No. :56316-86-0

Grade :Sublimed &gt;99%

Formula :C<sub>28</sub>H<sub>20</sub>S

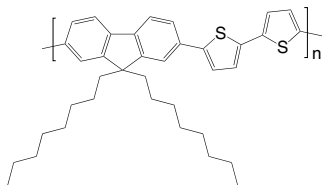
M.W. :388.52 g/mole



## LT-S979 | F8T2

Poly[(9,9-di-*n*-octylfluorenyl-2,7-diyl)-*alt*-2,2'-bithiophene-5,5'-diyl]

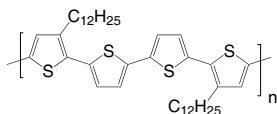
CAS No. : 210347-56-1  
 Grade : Mw >20,000 (GPC)  
 Formula : (C<sub>37</sub>H<sub>44</sub>S<sub>2</sub>)<sub>n</sub>  
 UV : 454 nm (in THF)  
 PL : 500 nm (in THF)  
 Solubility : Soluble in CHCl<sub>3</sub>, Chlorobenzene, Dichlorobenzene



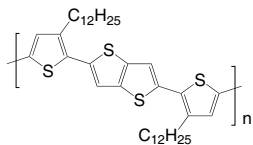
## LT-S980 | PQT-12

Poly[bis(3-dodecyl-2-thienyl)-2,2'-dithiophene-5,5'-diyl]

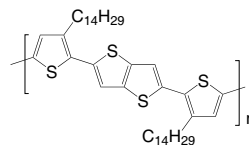
CAS No. : 827343-06-6  
 Grade : Mw = 10,000 ~ 40,000 (GPC)  
 Formula : (C<sub>40</sub>H<sub>56</sub>S<sub>4</sub>)<sub>n</sub>  
 UV : 473 nm (in Toluene)  
 Solubility : >5 mg/mL in CHCl<sub>3</sub>

LT-S981 | PBTTT-C<sub>12</sub>Poly[2,5-bis(3-dodecylthiophen-2-yl)thieno[3,2-*b*]thiophene]

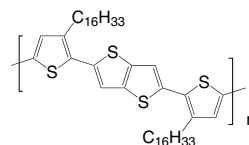
CAS No. : 888491-18-7  
 Grade : Mw = 10,000~100,000 (GPC)  
 Formula : (C<sub>38</sub>H<sub>54</sub>S<sub>4</sub>)<sub>n</sub>  
 UV : 460 nm (in THF)  
 PL : 557 nm (in THF)  
 Solubility : >5 mg/mL in CHCl<sub>3</sub>

LT-S982 | PBTTT-C<sub>14</sub>Poly[2,5-bis(3-tetradecylthiophen-2-yl)thieno[3,2-*b*]thiophene]

CAS No. : 888491-19-8  
 Grade : Mw = 10,000~100,000 (GPC)  
 Formula : (C<sub>42</sub>H<sub>62</sub>S<sub>4</sub>)<sub>n</sub>  
 UV : 466 nm (in THF)  
 PL : 557 nm (in THF)  
 Solubility : >5 mg/mL in CHCl<sub>3</sub>

LT-S9060 | PBTTT-C<sub>16</sub>Poly[2,5-bis(3-hexadecylthiophen-2-yl)thieno[3,2-*b*]thiophene]

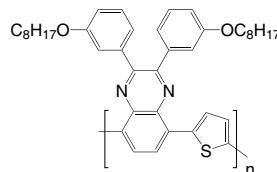
Grade : Mw = 10,000~100,000 (GPC)  
 Formula : (C<sub>46</sub>H<sub>70</sub>S<sub>4</sub>)<sub>n</sub>  
 UV : 466 nm (in THF)  
 PL : 557 nm (in THF)  
 Solubility : >5 mg/mL in CHCl<sub>3</sub>



## LT-S9091 | TQ1

Poly[2,3-bis-(3-octyloxyphenyl)quinoxaline-5,8-diyl-*alt*-thiophene-2,5-diyl]

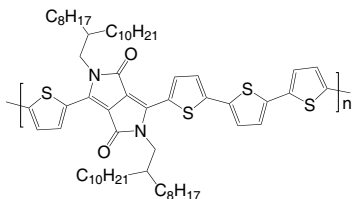
CAS No. : 565228-37-7  
 Grade : Mw >20,000 (GPC)  
 Formula : (C<sub>40</sub>H<sub>46</sub>N<sub>2</sub>O<sub>2</sub>S)<sub>n</sub>  
 Solubility : Soluble in CHCl<sub>3</sub>, Chlorobenzene, Dichlorobenzene



## LT-S9117 | PDQT

Poly[2,2'-[(2,5-bis(2-octyldodecyl)-3,6-dioxo-2,3,5,6-tetrahydropyrrolo[3,4-c]pyrrole-1,4-diyl)dithiophene-5,5'-diyl-*alt*-2,2'-bithiophene-5,5'-diyl]

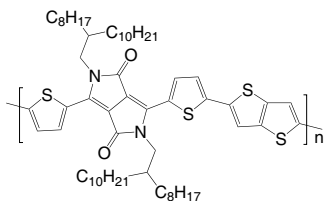
CAS No. : 1267540-03-3  
 Grade : Mw > 30,000 (GPC)  
 Formula : (C<sub>62</sub>H<sub>90</sub>N<sub>2</sub>O<sub>2</sub>S<sub>4</sub>)<sub>n</sub>  
 UV : 810 nm (in CHCl<sub>3</sub>)  
 Solubility : Soluble in CHCl<sub>3</sub>, Chlorobenzene, Dichlorobenzene



## LT-S9118 | PDBT-co-TT

Poly[2,2'-[(2,5-bis(2-octyldodecyl)-3,6-dioxo-2,3,5,6-tetrahydropyrrolo[3,4-c]pyrrole-1,4-diyl)dithiophene-5,5'-diyl-*alt*-thieno[3,2-b]thiophen-2,5-diyl]

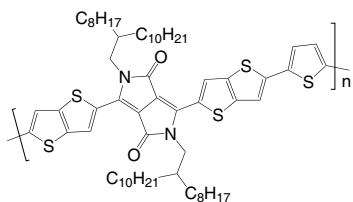
CAS No. : 1260685-65-1  
 Grade : Mw > 30,000 (GPC)  
 Formula : (C<sub>60</sub>H<sub>88</sub>N<sub>2</sub>O<sub>2</sub>S<sub>4</sub>)<sub>n</sub>  
 UV : 810 nm (in CHCl<sub>3</sub>)  
 Solubility : Soluble in CHCl<sub>3</sub>, Chlorobenzene, Dichlorobenzene



## LT-S9119 | PDPPBTT

Poly[2,2'-[(2,5-bis(2-octyldodecyl)-3,6-dioxo-2,3,5,6-tetrahydropyrrolo[3,4-c]pyrrole-1,4-diyl)dithiopheno[3,2-b]thiophene-5,5'-diyl-*alt*-thiophen-2,5-diyl]

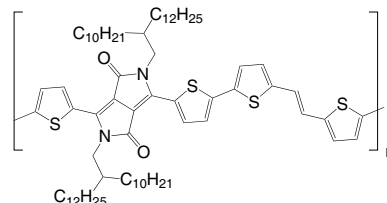
CAS No. : 1270977-98-4  
 Grade : Mw > 30,000 (GPC)  
 Formula : (C<sub>62</sub>H<sub>88</sub>N<sub>2</sub>O<sub>2</sub>S<sub>3</sub>)<sub>n</sub>  
 UV : 812 nm (in CHCl<sub>3</sub>)  
 Solubility : Soluble in CHCl<sub>3</sub>, Chlorobenzene, Dichlorobenzene



## LT-S9133 | PDVT-10

Poly[3,6-dithiophen-2-yl-2,5-di(2-decyltetradecyl)pyrrolo[3,4-c]pyrrole-1,4-dione-*alt*-thienylenevinylene-2,5-yl]

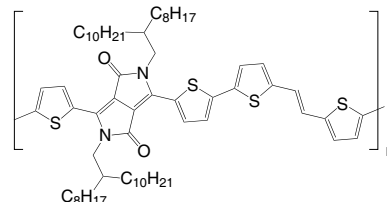
CAS No. : 1442682-99-6  
 Grade : Mw > 30,000 (GPC)  
 Formula : (C<sub>72</sub>H<sub>108</sub>N<sub>2</sub>O<sub>2</sub>S<sub>4</sub>)<sub>n</sub>  
 Solubility : Soluble in CHCl<sub>3</sub>, Chlorobenzene, Dichlorobenzene



## LT-S9155 | PDVT-8

Poly[3,6-dithiophen-2-yl-2,5-di(2-octyldodecyl)pyrrolo[3,4-c]pyrrole-1,4-dione-*alt*-thienylenevinylene-2,5-yl]

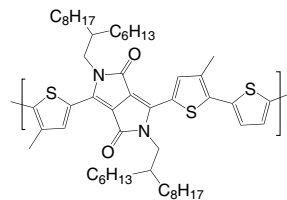
CAS No. : 1403959-01-2  
 Grade : Mw > 20,000 (GPC)  
 Formula : (C<sub>64</sub>H<sub>92</sub>N<sub>2</sub>O<sub>2</sub>S<sub>4</sub>)<sub>n</sub>  
 Solubility : Soluble in CHCl<sub>3</sub>, Chlorobenzene, Dichlorobenzene



## LT-S9178 | PMDPP3T

Poly[[2,5-bis(2-hexyldodecyl)-2,3,5,6-tetrahydro-3,6-dioxopyrrolo[3,4-c]pyrrole-1,4-diyl]-*alt*-[3',3''-dimethyl-2,2':5',2''-terthiophene]-5,5'-diyl]

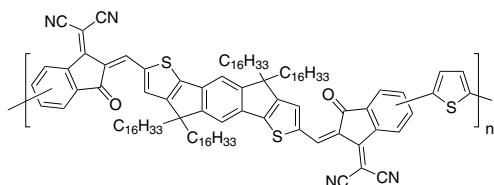
CAS No. : 1429119-71-0  
 Grade : Mw > 30,000 (GPC)  
 Formula : (C<sub>52</sub>H<sub>76</sub>N<sub>2</sub>O<sub>2</sub>S<sub>3</sub>)<sub>n</sub>  
 UV : 830 nm (in CHCl<sub>3</sub>)  
 Solubility : Soluble in CHCl<sub>3</sub>, Chlorobenzene, Dichlorobenzene



## LT-S9591 | PZ1

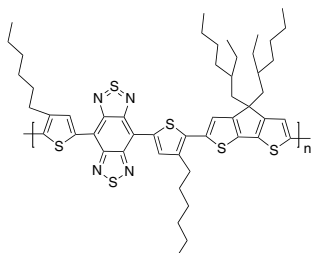
Poly(2,2'-((2Z,2'Z)-((4,4,9,9-tetrahexadecyl-4,9-dihydro-s-indaceno[1,2-b:5,6-b']dithiophene-2,7-diyl)bis(methanylylidene)bis(3-oxo-2,3-dihydro-1H-indene-2,1-diylidene)dimalononitrile-5,5'-diyl-*alt*-thiophen-2,5-diyl)

CAS No. : 2177247-65-1  
 Grade : Mw > 10000  
 Formula : (C<sub>110</sub>H<sub>146</sub>N<sub>4</sub>O<sub>2</sub>S<sub>3</sub>)<sub>n</sub>

LT-S9619 | PBBTCD **NEW**

Poly[(4,7-bis(3-hexylthien-2-yl)- 2λ462-benzo[1,2-c:4,5-c'] bis[1,2,5] thiadiazole-*alt*-(3,3-bis(2-ethylhexyl)-4H-cyclopenta[2,1-b:3,4-b']dithiophene)]

CAS No. : 1334032-14-2  
 Grade : Mw > 10,000  
 Formula : (C<sub>51</sub>H<sub>64</sub>N<sub>4</sub>S<sub>6</sub>)<sub>n</sub>

LT-S9620 | PBBTSiD **NEW**

Poly[(4,7-bis(3-hexylthien-2-yl)- 2λ462-benzo[1,2-c:4,5-c'] bis[1,2,5] thiadiazole-*alt*-(3,3'-bis(2-ethylhexylsilylene)-2,2'-bithiophene)]

CAS No. : 1334032-16-4  
 Grade : Mw > 10,000  
 Formula : (C<sub>50</sub>H<sub>64</sub>N<sub>4</sub>S<sub>6</sub>Si)<sub>n</sub>

